

OLFM1 RABBIT PAB

Cat.#: S217092

Product Name: Anti-OLFM1 Rabbit Polyclonal Antibody

Synonyms: AMY; NOEI; OlfA; NOELINI

UNIPROT ID: Q99784 (Gene Accession - BC008763)

Background: This gene product shares extensive sequence similarity with the rat neuronal olfactomedin-related ER localized protein. While the exact function of the encoded protein is not known, its abundant expression in brain suggests that it may have an essential role in nerve tissue. Several alternatively spliced transcripts encoding different isoforms have been found for this gene.

Immunogen: Fusion protein of human OLFM1

Applications: ELISA, IHC

Recommended Dilutions: IHC: 25-100; ELISA: 2000-5000

Host Species: Rabbit

Clonality: Rabbit Polyclonal

Isotype: Immunogen-specific rabbit IgG

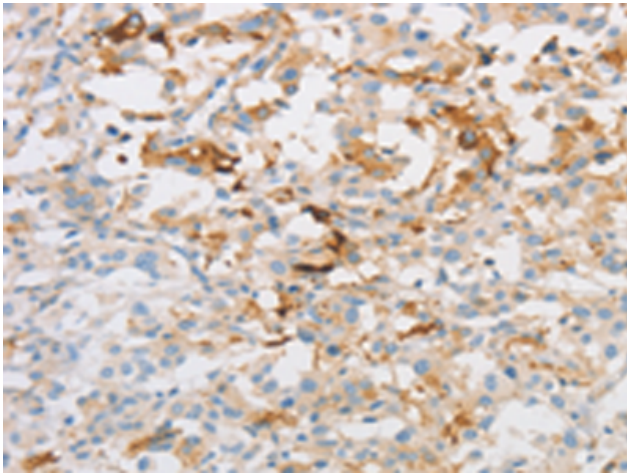
Purification: Antigen affinity purification

Species Reactivity: Human, Mouse, Rat

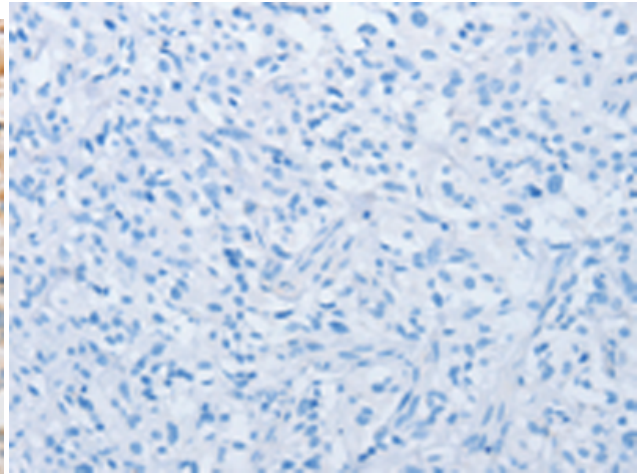
Constituents: PBS (without Mg²⁺ and Ca²⁺), pH 7.4, 150 mM NaCl, 0.05% Sodium Azide and 40% glycerol

Research Areas: Neuroscience, Stem Cells

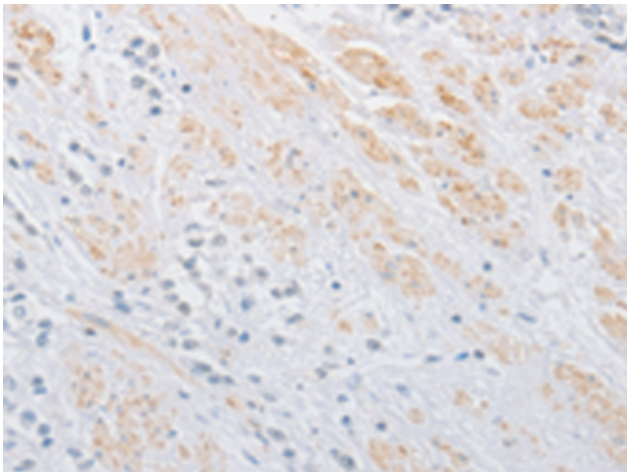
Storage & Shipping: Store at -20°C. Avoid repeated freezing and thawing



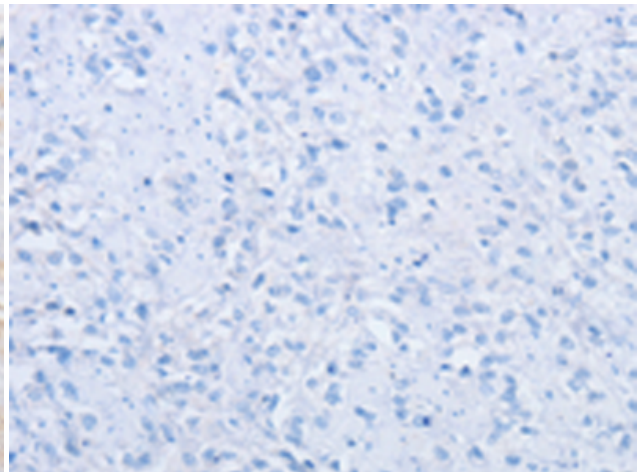
Immunohistochemistry analysis of paraffin embedded Human thyroid cancer tissue using 217092(OLFM1 Antibody) at a dilution of 1/30(Cytoplasm).



In comparison with the IHC on the left, the same paraffin-embedded Human thyroid cancer tissue is first treated with the fusion protein and then with 217092(Anti-OLFM1 Antibody) at dilution 1/30.



The image on the left is immunohistochemistry of paraffin-embedded Human prostate cancer tissue using 217092(Anti-OLFM1 Antibody) at a dilution of 1/30.



In comparison with the IHC on the left, the same paraffin-embedded Human prostate cancer tissue is first treated with fusion protein and then with D221773(Anti-OLFM1 Antibody) at dilution 1/30.