

## OLFML3 RABBIT PAB

**Cat.#:** S218686

**Product Name:** Anti-OLFML3 Rabbit Polyclonal Antibody

**Synonyms:** OLF44; HNOEL-iso

**UNIPROT ID:** Q9NRN5 (Gene Accession - BC009920 )

**Background:** Secreted scaffold protein that plays an essential role in dorsoventral patterning during early development. Stabilizes axial formation by restricting chordin (CHRD) activity on the dorsal side. Acts by facilitating the association between the tolloid proteases and their substrate chordin (CHRD), leading to enhance chordin (CHRD) degradation (By similarity). May have matrix-related function involved in placental and embryonic development, or play a similar role in other physiological processes.

**Immunogen:** Fusion protein of human OLFML3

**Applications:** ELISA, IHC

**Recommended Dilutions:** IHC: 25-100; ELISA: 5000-10000

**Host Species:** Rabbit

**Clonality:** Rabbit Polyclonal

**Isotype:** Immunogen-specific rabbit IgG

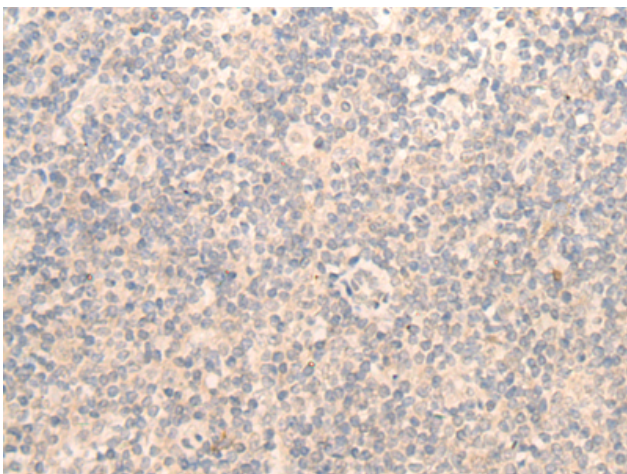
**Purification:** Antigen affinity purification

**Species Reactivity:** Human, Mouse, Rat

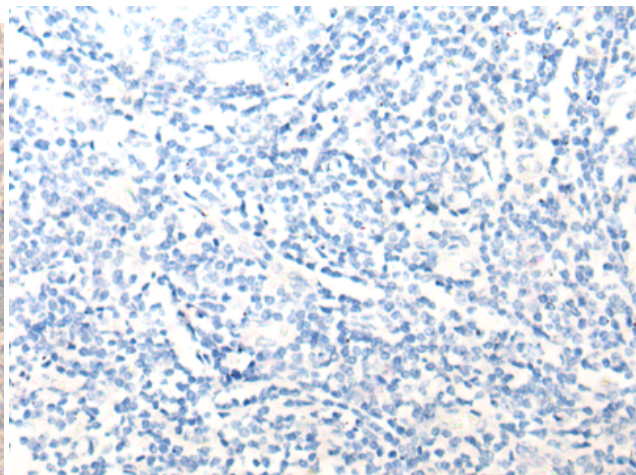
**Constituents:** PBS (without Mg<sup>2+</sup> and Ca<sup>2+</sup>), pH 7.4, 150 mM NaCl, 0.05% Sodium Azide and 40% glycerol

**Research Areas:** Signal Transduction, Cardiovascular

**Storage & Shipping:** Store at -20°C. Avoid repeated freezing and thawing



Immunohistochemistry analysis of paraffin embedded Human tonsil tissue using 218686(OLFML3 Antibody) at a dilution of 1/25(Secreted).



In comparison with the IHC on the left, the same paraffin-embedded Human tonsil tissue is first treated with the fusion protein and then with 218686(Anti-OLFML3 Antibody) at dilution 1/25.