

OLR1 RABBIT PAB

Cat.#: S213628

Product Name: Anti-OLR1 Rabbit Polyclonal Antibody

Synonyms: LOX1, LOXIN, SLOX1, CLEC8A, SCARE1

UNIPROT ID: P78380 (Gene Accession - NP_002534)

Background: This gene encodes a low density lipoprotein receptor that belongs to the C-type lectin superfamily. This gene is regulated through the cyclic AMP signaling pathway. The encoded protein binds, internalizes and degrades oxidized low-density lipoprotein. This protein may be involved in the regulation of Fas-induced apoptosis. This protein may play a role as a scavenger receptor. Mutations of this gene have been associated with atherosclerosis, risk of myocardial infarction, and may modify the risk of Alzheimer's disease. Alternate splicing results in multiple transcript variants.

Immunogen: Synthetic peptide of human OLR1

Applications: ELISA, WB, IHC

Recommended Dilutions: IHC: Oct-50;WB: 500-2000;ELISA: 1000-5000

Host Species: Rabbit

Clonality: Rabbit Polyclonal

Isotype: Immunogen-specific rabbit IgG

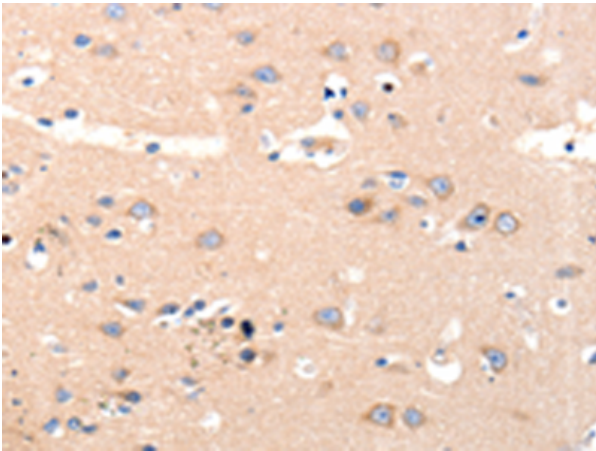
Purification: Antigen affinity purification

Species Reactivity: Human, Mouse

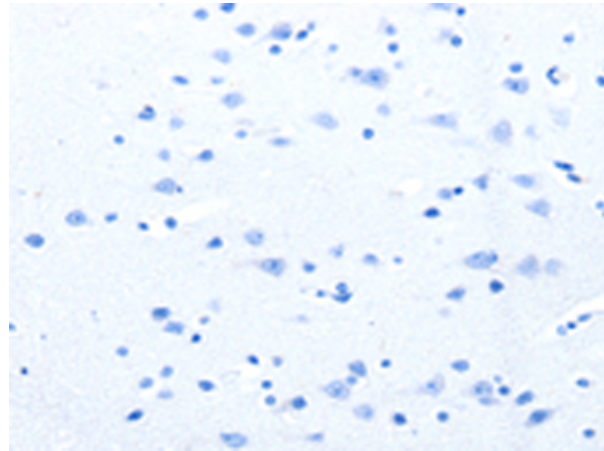
Constituents: PBS (without Mg²⁺ and Ca²⁺), pH 7.4, 150 mM NaCl, 0.05% Sodium Azide and 40% glycerol

Research Areas: Metabolism, Cardiovascular

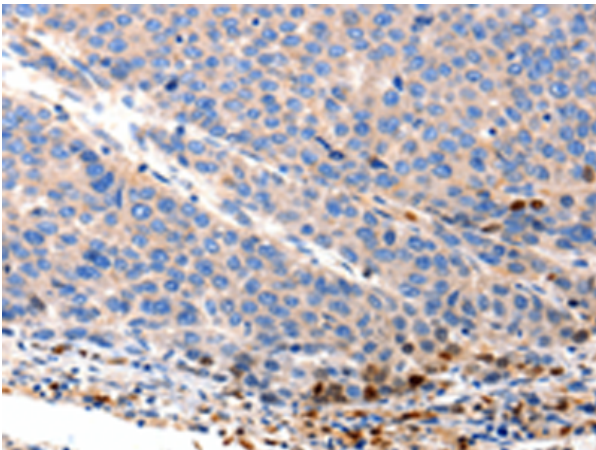
Storage & Shipping: Store at -20°C. Avoid repeated freezing and thawing



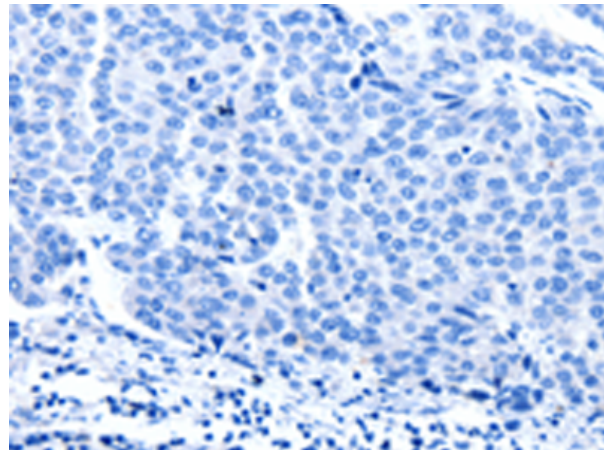
Immunohistochemistry analysis of paraffin embedded Human brain tissue using 213628(OLR1 Antibody) at a dilution of 1/12(Cytoplasm).



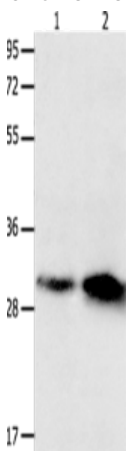
In comparison with the IHC on the left, the same paraffin-embedded Human brain tissue is first treated with the synthetic peptide and then with 213628(Anti-OLR1 Antibody) at dilution 1/12.



The image on the left is immunohistochemistry of paraffin-embedded Human liver cancer tissue using 213628(Anti-OLR1 Antibody) at a dilution of 1/12.



In comparison with the IHC on the left, the same paraffin-embedded Human liver cancer tissue is first treated with synthetic peptide and then with D160550(Anti-OLR1 Antibody) at dilution 1/12.



Gel: 12%SDS-PAGE, Lysate: 40 µg;
Lane 1-2: Mouse brain tissue, Mouse lung tissue;
Primary antibody: 213628(OLR1 Antibody) at dilution 1/250;
Secondary antibody: Goat anti rabbit IgG at 1/8000 dilution;
Exposure time: 30 seconds



Product Description

Pioneering GTPase and Oncogene Product Development since 2010
