

OMG RABBIT PAB

Cat.#: S216697

Product Name: Anti-OMG Rabbit Polyclonal Antibody

Synonyms: OMGP

UNIPROT ID: P23515 (Gene Accession - BC018050)

Background: This gene is cell adhesion molecule contributing to the interactive process required for myelination in the central nervous system. Mostly expression in Oligodendrocytes and myelin tissues.

Immunogen: Fusion protein of human OMG

Applications: ELISA, IHC

Recommended Dilutions: IHC: 25-100; ELISA: 1000-5000

Host Species: Rabbit

Clonality: Rabbit Polyclonal

Isotype: Immunogen-specific rabbit IgG

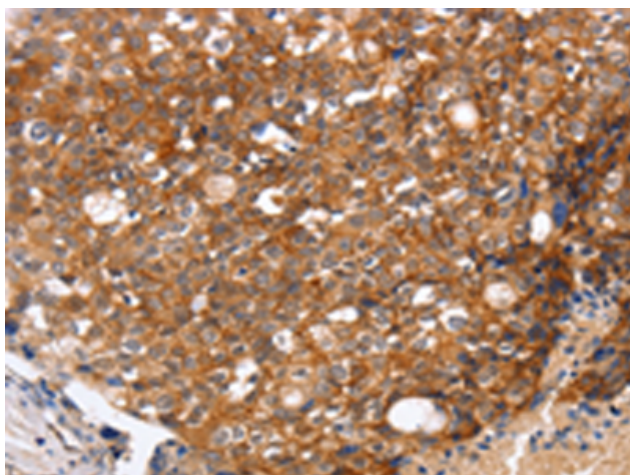
Purification: Antigen affinity purification

Species Reactivity: Human, Mouse

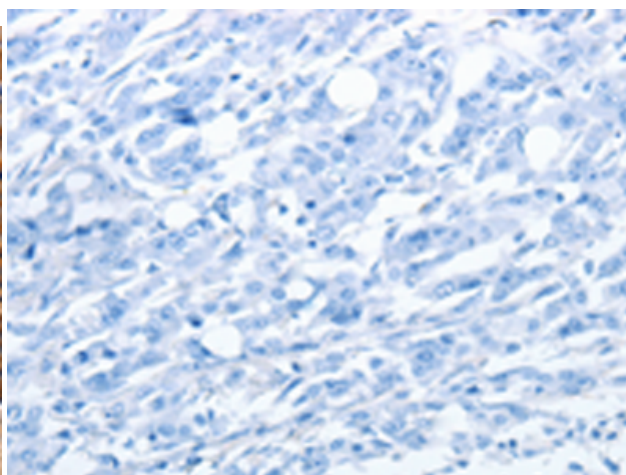
Constituents: PBS (without Mg²⁺ and Ca²⁺), pH 7.4, 150 mM NaCl, 0.05% Sodium Azide and 40% glycerol

Research Areas: Neuroscience

Storage & Shipping: Store at -20°C. Avoid repeated freezing and thawing



Immunohistochemistry analysis of paraffin embedded Human breast cancer tissue using 216697(OMG Antibody) at a dilution of 1/20(Cytoplasm, Cell membrane).



In comparison with the IHC on the left, the same paraffin-embedded Human breast cancer tissue is first treated with the fusion protein and then with 216697(Anti-OMG Antibody) at dilution 1/20.