

## OMG RABBIT PAB

**Cat.#:** S220770

**Product Name:** Anti-OMG Rabbit Polyclonal Antibody

**Synonyms:** OMGP

**UNIPROT ID:** P23515 (Gene Accession - NP\_002535 )

**Background:** Oligodendrocyte myelin glycoprotein (OMG, OMgp) is a glycosylphosphatidylinositol-anchored protein expressed by neurons and oligodendrocytes that influences the development of the adult central nervous system (CNS). OMG inhibits neurite outgrowth through its interaction with the Nogo receptor. This function requires its leucine-rich repeat domain, a highly-conserved region in OMG that influences cell proliferation, formation and maintenance of myelin sheaths. OMG inhibits neurite outgrowth from rat cerebellar granule and hippocampal cells; from dorsal root ganglion explants in which growth cone collapse was observed; from rat retinal ganglion neurons; and from NG108 and PC-12 cells.

**Immunogen:** Synthetic peptide of human OMG

**Applications:** ELISA, IHC

**Recommended Dilutions:** IHC: 25-100; ELISA: 1000-2000

**Host Species:** Rabbit

**Clonality:** Rabbit Polyclonal

**Isotype:** Immunogen-specific rabbit IgG

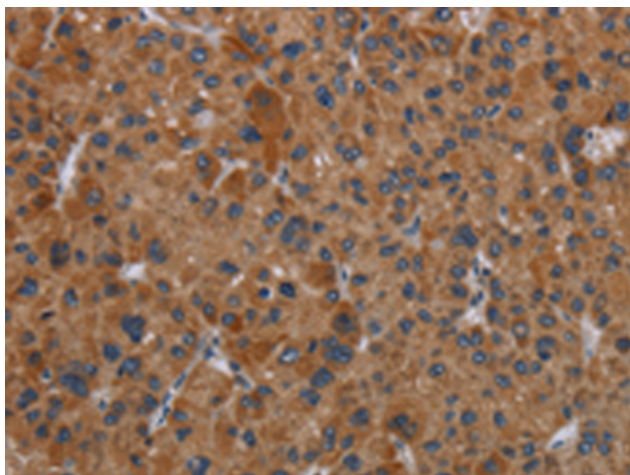
**Purification:** Antigen affinity purification

**Species Reactivity:** Human, Mouse

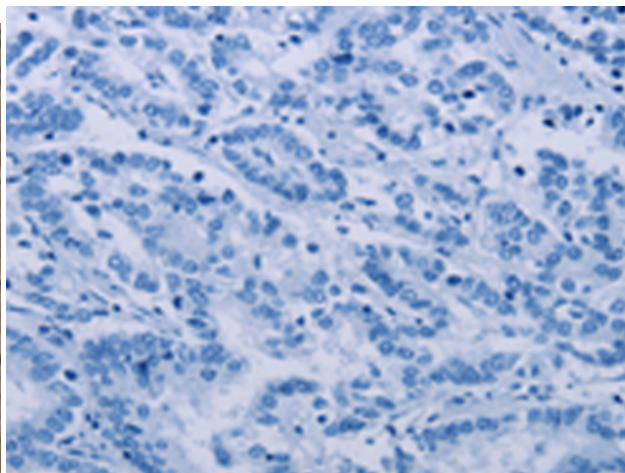
**Constituents:** PBS (without Mg<sup>2+</sup> and Ca<sup>2+</sup>), pH 7.4, 150 mM NaCl, 0.05% Sodium Azide and 40% glycerol

**Research Areas:** Neuroscience

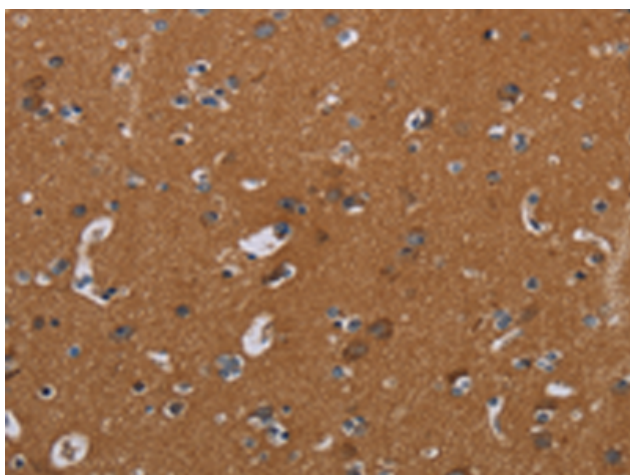
**Storage & Shipping:** Store at -20°C. Avoid repeated freezing and thawing



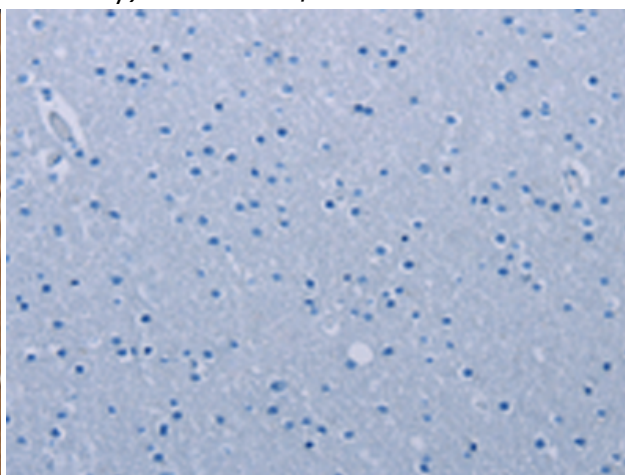
Immunohistochemistry analysis of paraffin embedded Human liver cancer tissue using 220770(OMG Antibody) at a dilution of 1/30(Nucleus or Cytoplasm ).



In comparison with the IHC on the left, the same paraffin-embedded Human liver cancer tissue is first treated with the synthetic peptide and then with 220770(Anti-OMG Antibody) at dilution 1/30.



The image on the left is immunohistochemistry of paraffin-embedded Human brain tissue using 220770(Anti-OMG Antibody) at a dilution of 1/30.



In comparison with the IHC on the left, the same paraffin-embedded Human brain tissue is first treated with synthetic peptide and then with D261986(Anti-OMG Antibody) at dilution 1/30.