

OPRD1 RABBIT PAB

Cat.#: S220502

Product Name: Anti-OPRD1 Rabbit Polyclonal Antibody

Synonyms: OPRD

UNIPROT ID: P41143 (Gene Accession - NP_000902)

Background: The opioid receptor, delta 1, also known as delta opioid receptor or simply delta receptor, abbreviated DOR, is an opioid receptor that has enkephalins as its endogenous ligands. Pharmacological studies and molecular cloning have led to the identification of three different types of opioid receptor, mu-type, delta-type and kappa-type, also designated MOR-1, DOR-1 and KOR-1, respectively. MOR-1 is a receptor for beta-endorphin, DOR-1 is a receptor for enkephalins, and KOR-1 is a receptor for dynorphins.

Immunogen: Synthetic peptide of human OPRD1

Applications: ELISA, IHC

Recommended Dilutions: IHC: 25-100; ELISA: 1000-2000

Host Species: Rabbit

Clonality: Rabbit Polyclonal

Isotype: Immunogen-specific rabbit IgG

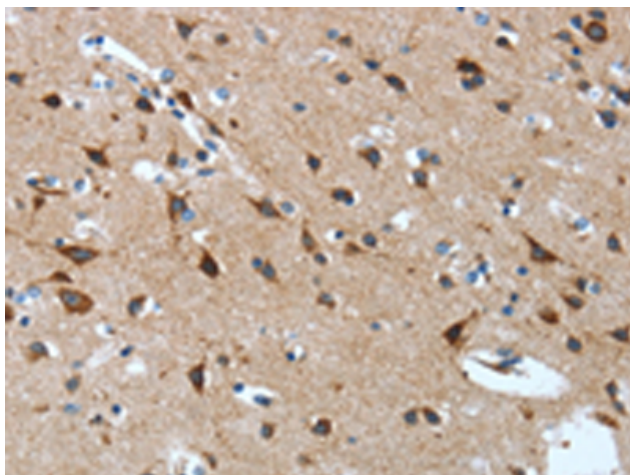
Purification: Antigen affinity purification

Species Reactivity: Human, Mouse, Rat

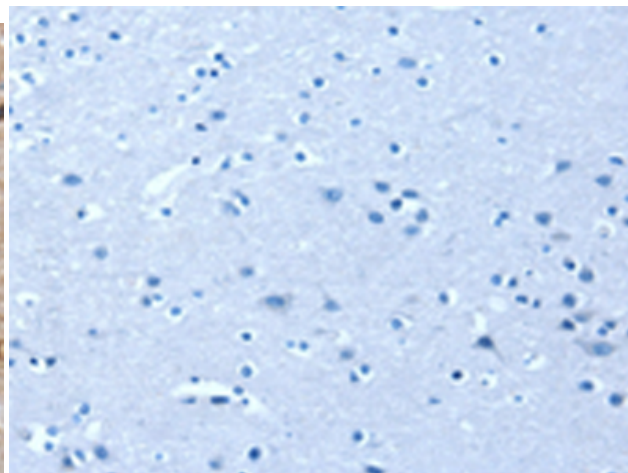
Constituents: PBS (without Mg²⁺ and Ca²⁺), pH 7.4, 150 mM NaCl, 0.05% Sodium Azide and 40% glycerol

Research Areas: Neuroscience

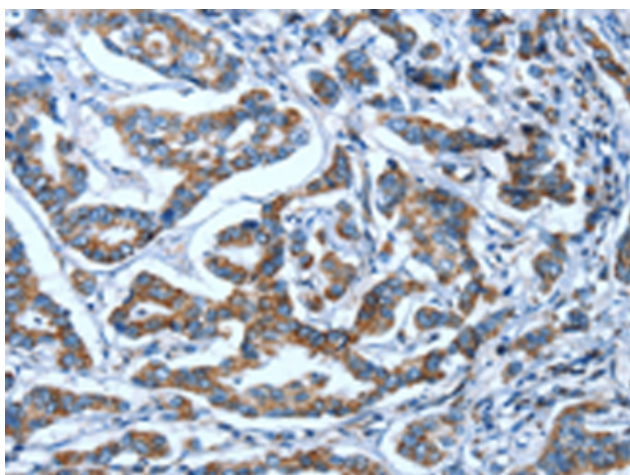
Storage & Shipping: Store at -20°C. Avoid repeated freezing and thawing



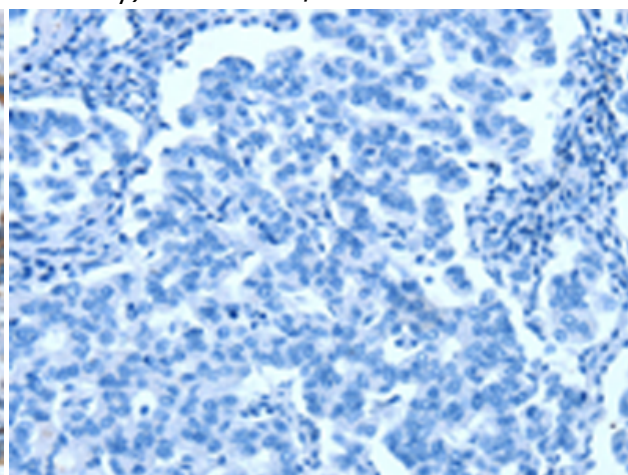
Immunohistochemistry analysis of paraffin embedded Human brain tissue using 220502(OPRD1 Antibody) at a dilution of 1/15(Cytoplasm).



In comparison with the IHC on the left, the same paraffin-embedded Human brain tissue is first treated with the synthetic peptide and then with 220502(Anti-OPRD1 Antibody) at dilution 1/15.



The image on the left is immunohistochemistry of paraffin-embedded Human breast cancer tissue using 220502(Anti-OPRD1 Antibody) at a dilution of 1/15.



In comparison with the IHC on the left, the same paraffin-embedded Human breast cancer tissue is first treated with synthetic peptide and then with D261616(Anti-OPRD1 Antibody) at dilution 1/15.