

## OPTINEURIN RABBIT MAB

**Cat.#:** N263470

**Product Name:** Anti-Optineurin Rabbit Monoclonal Antibody

**Synonyms:** NRP; FIP2; HIP7; HYPL; ALS12; GLC1E; TFIIIA-INTP

**UNIPROT ID:** Q96CV9

**Background:** Plays an important role in the maintenance of the Golgi complex, in membrane trafficking, in exocytosis, through its interaction with myosin VI and Rab8.

**Immunogen:** Recombinant protein of human Optineurin

**Applications:** WB,IHC-P

**Recommended Dilutions:** WB: 1/500-1/1000 IHC: 1/50-1/100

**Host Species:** Rabbit

**Clonality:** Rabbit Monoclonal

**Clone ID:** R01-2C5

**MW:** Calculated MW: 66 kDa; Observed MW: 75 kDa

**Isotype:** IgG

**Purification:** Affinity Purified

**Species Reactivity:** Human

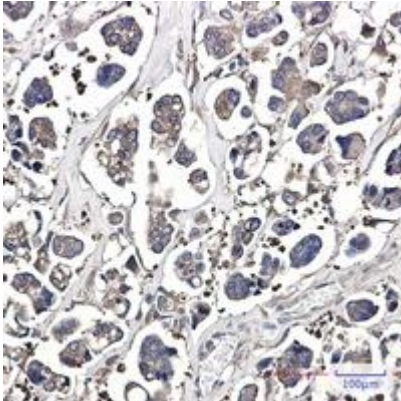
**Conjugation:** Unconjugated

**Modification:** Unmodified

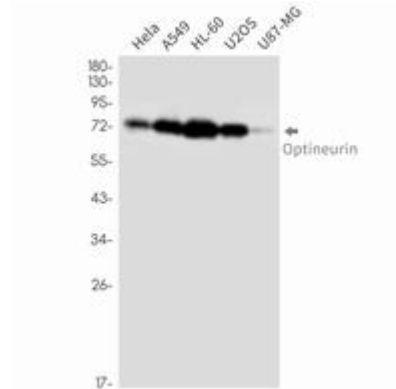
**Constituents:** PBS (without Mg<sup>2+</sup> and Ca<sup>2+</sup>), pH 7.3 containing 50% glycerol, 0.5% BSA and 0.02% sodium azide

**Research Areas:** Immunology

**Storage & Shipping:** Store at -20°C. Avoid repeated freezing and thawing



Immunohistochemistry analysis of paraffin-embedded Human Cholangiocarcinoma using Optineurin antibody. High-pressure and temperature Sodium Citrate pH 6.0 was used for antigen retrieval.



Western blot analysis of Optineurin in HeLa, A549, HL-60, U2OS, U87-MG lysates using Optineurin antibody.