

OR1A1 RABBIT MAB

Cat.#: N263126

Product Name: Anti-OR1A1 Rabbit Monoclonal Antibody

Synonyms: OR17-7

UNIPROT ID: Q9PIQ5

Background: Odorant receptor.

Immunogen: A synthetic peptide of human OR1A1

Applications: WB,IP

Recommended Dilutions: WB: 1/500-1/1000 IP: 1/20

Host Species: Rabbit

Clonality: Rabbit Monoclonal

Clone ID: R02-2G8

MW: Calculated MW: 35 kDa; Observed MW: 35 kDa

Isotype: IgG

Purification: Affinity Purified

Species Reactivity: Human,Mouse,Rat

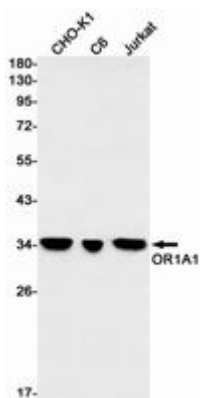
Conjugation: Unconjugated

Modification: Unmodified

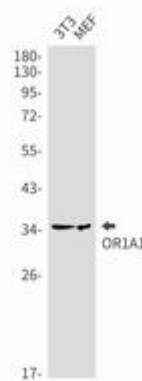
Constituents: PBS (without Mg²⁺ and Ca²⁺), pH 7.3 containing 50% glycerol, 0.5% BSA and 0.02% sodium azide

Research Areas: Neuroscience

Storage & Shipping: Store at -20°C. Avoid repeated freezing and thawing



Western blot analysis of OR1A1 in CHO-K1, C6, Jurkat lysates using OR1A1 antibody.



Western blot analysis of OR1A1 in 3T3, MEF lysates using OR1A1 antibody.



Product Description

Pioneering GTPase and Oncogene Product Development since 2010
