

ORAI3 RABBIT MAB

Cat.#: N263471

Product Name: Anti-ORAI3 Rabbit Monoclonal Antibody

Synonyms: TMEM142C

UNIPROT ID: Q9BRQ5

Background: Ca²⁺ release-activated Ca²⁺-like (CRAC-like) channel subunit which mediates Ca²⁺ influx and increase in Ca²⁺-selective current by synergy with the Ca²⁺ sensor, STIM1.

Immunogen: Recombinant protein of human Orai3

Applications: WB,IHC-P

Recommended Dilutions: WB: 1/500-1/1000 IHC: 1/50-1/100

Host Species: Rabbit

Clonality: Rabbit Monoclonal

Clone ID: R06-8B3

MW: Calculated MW: 31 kDa; Observed MW: 31 kDa

Isotype: IgG

Purification: Affinity Purified

Species Reactivity: Human

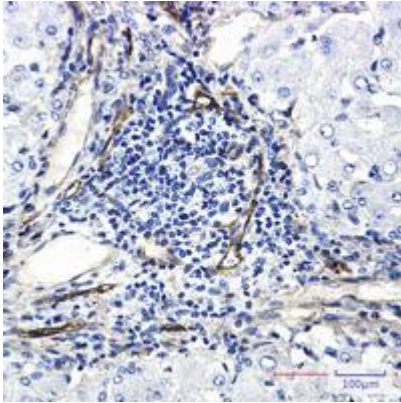
Conjugation: Unconjugated

Modification: Unmodified

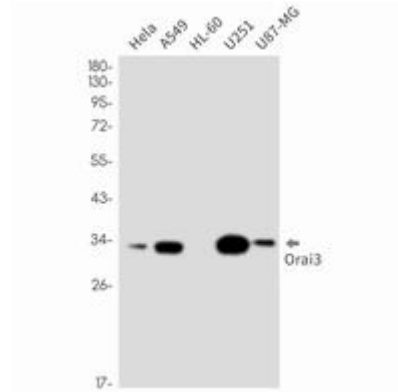
Constituents: PBS (without Mg²⁺ and Ca²⁺), pH 7.3 containing 50% glycerol, 0.5% BSA and 0.02% sodium azide

Research Areas: -

Storage & Shipping: Store at -20°C. Avoid repeated freezing and thawing



Immunohistochemistry analysis of paraffin-embedded liver cancer using Orai3 antibody. High-pressure and temperature Sodium Citrate pH 6.0 was used for antigen retrieval.



Western blot analysis of Orai3 in HeLa, A549, HL-60, U251, U87-MG lysates using ORAI3 antibody.