

OSGIN2 RABBIT PAB

Cat.#: S219488

Product Name: Anti-OSGIN2 Rabbit Polyclonal Antibody

Synonyms: ht4l; C8orf1

UNIPROT ID: Q9Y236 (Gene Accession - BC031054)

Background: Predicted to enable growth factor activity. Predicted to be involved in negative regulation of cell growth.

Immunogen: Fusion protein of human OSGIN2

Applications: ELISA, IHC

Recommended Dilutions: IHC: 50-200; ELISA: 5000-10000

Host Species: Rabbit

Clonality: Rabbit Polyclonal

Isotype: Immunogen-specific rabbit IgG

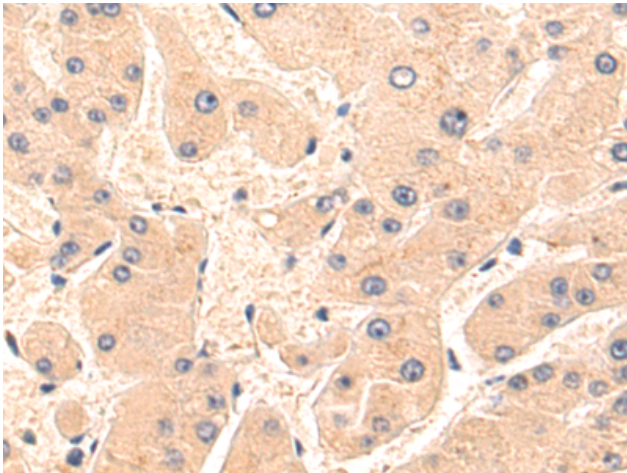
Purification: Antigen affinity purification

Species Reactivity: Human

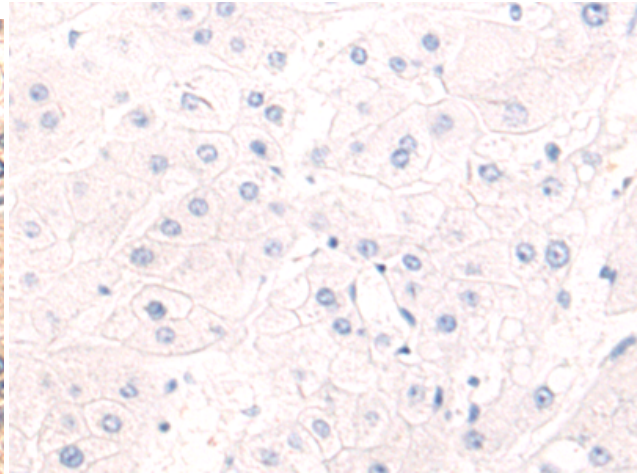
Constituents: PBS (without Mg²⁺ and Ca²⁺), pH 7.4, 150 mM NaCl, 0.05% Sodium Azide and 40% glycerol

Research Areas: Cell Biology

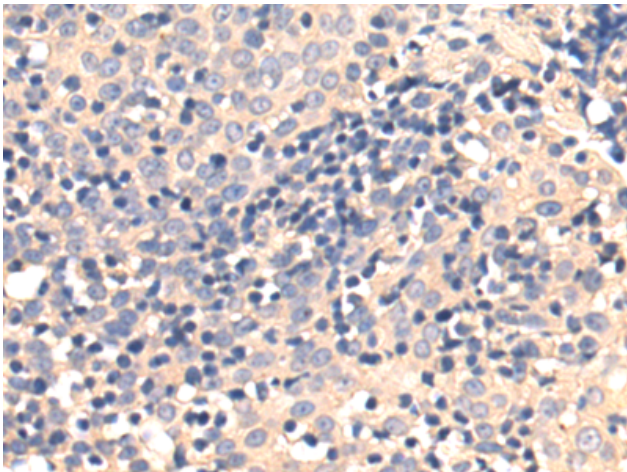
Storage & Shipping: Store at -20°C. Avoid repeated freezing and thawing



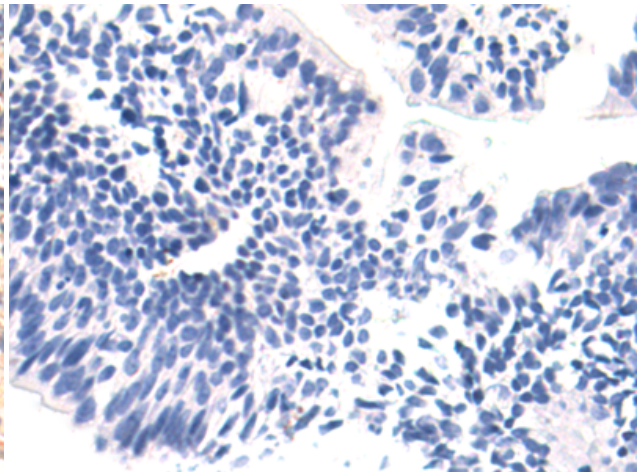
Immunohistochemistry analysis of paraffin embedded Human liver cancer tissue using 219488 (OSGIN2 Antibody) at a dilution of 1/70 (Cytoplasm).



In comparison with the IHC on the left, the same paraffin-embedded Human liver cancer tissue is first treated with the fusion protein and then with 219488 (Anti-OSGIN2 Antibody) at dilution 1/70.



The image on the left is immunohistochemistry of paraffin-embedded Human tonsil tissue using 219488 (Anti-OSGIN2 Antibody) at a dilution of 1/70.



In comparison with the IHC on the left, the same paraffin-embedded Human tonsil tissue is first treated with fusion protein and then with D227353 (Anti-OSGIN2 Antibody) at dilution 1/70.