

OSTEOPONTIN RABBIT MAB

Cat.#: N263116

Product Name: Anti-Osteopontin Rabbit Monoclonal Antibody

Synonyms: SPPI; BNSP; OPN; PSEC0156; Osteopontin; Bone sialoprotein 1; Nephropontin; Secreted phosphoprotein 1; SPP-1; Urinary stone protein; Uropontin

UNIPROT ID: P10451

Background: osteopontin Binds tightly to hydroxyapatite. Appears to form an integral part of the mineralized matrix. Probably important to cell-matrix interaction. Belongs to the osteopontin family. Ligand for integrin alpha-V/beta-3. 4 isoforms of the human protein are produced by alternative splicing.

Immunogen: A synthetic peptide of human Osteopontin

Applications: WB,IHC-P

Recommended Dilutions: WB: 1/500-1/1000 IHC: 1/50-1/100

Host Species: Rabbit

Clonality: Rabbit Monoclonal

Clone ID: R08-1C5

MW: Calculated MW: 35 kDa; Observed MW: 35-100 kDa

Isotype: IgG

Purification: Affinity Purified

Species Reactivity: Human,Hamster,Rat

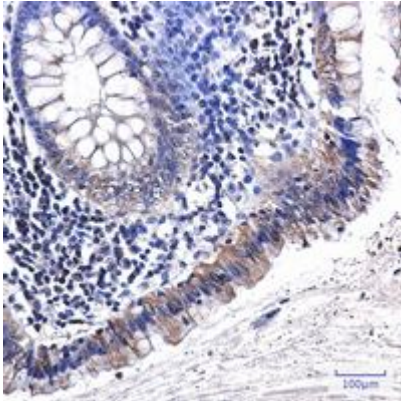
Conjugation: Unconjugated

Modification: Unmodified

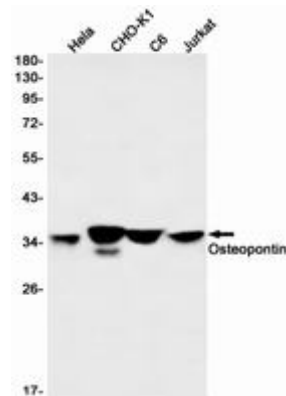
Constituents: PBS (without Mg²⁺ and Ca²⁺), pH 7.3 containing 50% glycerol, 0.5% BSA and 0.02% sodium azide

Research Areas: Cardiovascular

Storage & Shipping: Store at -20°C. Avoid repeated freezing and thawing



Immunohistochemistry analysis of paraffin-embedded Human colon cancer using Osteopontin antibody. High-pressure and temperature Sodium Citrate pH 6.0 was used for antigen retrieval.



Western blot analysis of Osteopontin in HeLa, CHO-K1, C6, Jurkat lysates using Osteopontin antibody.