

OTC RABBIT PAB

Cat.#: N226000

Product Name: Anti-OTC Rabbit pAb

Synonyms: OTCase; Ornithine carbamoyltransferase; mitochondrial; OCTD

UNIPROT ID: P00480

Background: This nuclear gene encodes a mitochondrial matrix enzyme. Missense, nonsense, and frameshift mutations in this enzyme lead to ornithine transcarbamylase deficiency, which causes hyperammonemia. Since the gene for this enzyme maps close to that for Duchenne muscular dystrophy, it may play a role in that disease also.

Immunogen: A synthetic peptide of human Ornithine Carbamoyltransferase

Applications: WB,IHC-P,IP

Recommended Dilutions: WB: 1/500-1/1000 IHC: 1/50-1/100 IP: 1/20

Host Species: Rabbit

Clonality: Rabbit Polyclonal

Clone ID: -

MW: Calculated MW: 40 kDa; Observed MW: 40 kDa

Isotype: IgG

Purification: Affinity Purified

Species Reactivity: Mouse,Rat

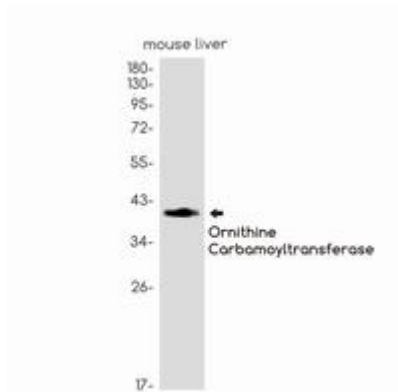
Conjugation: Unconjugated

Modification: Unmodified

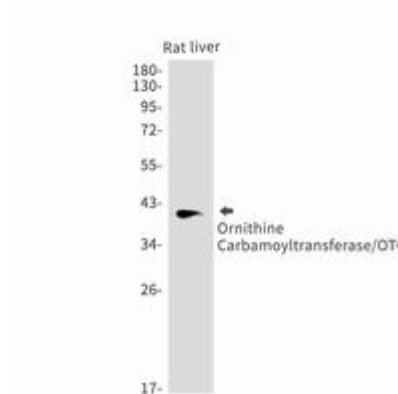
Constituents: PBS (without Mg²⁺ and Ca²⁺), pH 7.3 containing 50% glycerol, 0.5% BSA and 0.02% sodium azide

Research Areas: Tags & Cell Markers

Storage & Shipping: Store at -20°C. Avoid repeated freezing and thawing



Western blot analysis of Ornithine Carbamoyltransferase/OTC in mouse liver lysates using Ornithine Carbamoyltransferase/OTC antibody.



Western blot analysis of Ornithine Carbamoyltransferase/OTC in rat liver lysates using OTC antibody.