

OTX1/2 RABBIT PAB

Cat.#: N225890

Product Name: Anti-OTX1/2 Rabbit pAb

Synonyms: Homeobox protein OTX1; Homeobox protein OTX2; Orthodenticle 1; Orthodenticle 2; Orthodenticle homeobox 1; Orthodenticle homeobox 2; Orthodenticle1; Orthodenticle2; otx1; otx2

UNIPROT ID: P32242/P32243

Background: Probably plays a role in the development of the brain and the sense organs. Can bind to the BCD target sequence (BTS): 5'-TCTAATCCC-3'.

Immunogen: A synthesized peptide derived from human Otx1/2

Applications: WB,IHC-P,ChIP

Recommended Dilutions: WB: 1/500-1/1000 IHC: 1/50-1/100 ChIP: 1/20

Host Species: Rabbit

Clonality: Rabbit Polyclonal

Clone ID: -

MW: Calculated MW: 37 kDa; Observed MW: 32 kDa

Isotype: IgG

Purification: Affinity Chromatography

Species Reactivity: Human,Mouse,Rat

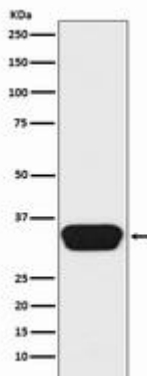
Conjugation: Unconjugated

Modification: Unmodified

Constituents: PBS (without Mg²⁺ and Ca²⁺), pH 7.3 containing 50% glycerol, 0.5% BSA and 0.02% sodium azide

Research Areas: Neuroscience

Storage & Shipping: Store at -20°C. Avoid repeated freezing and thawing



Western blot analysis of Otx1/2 in Y79 lysates using OTX1/2 antibody.



Product Description

Pioneering GTPase and Oncogene Product Development since 2010
