

OX40L RABBIT PAB

Cat.#: N225045

Product Name: Anti-OX40L Rabbit pAb

Synonyms: TNFSF4; TXGP1; Tumor necrosis factor ligand superfamily member 4; Glycoprotein Gp34; OX40 ligand; OX40L; TAX transcriptionally-activated glycoprotein 1; CD antigen CD252

UNIPROT ID: P23510

Background: This gene encodes a cytokine of the tumor necrosis factor (TNF) ligand family. The encoded protein functions in T cell antigen-presenting cell (APC) interactions and mediates adhesion of activated T cells to endothelial cells. Polymorphisms in this gene have been associated with Sjogren's syndrome and systemic lupus erythematosus. Alternative splicing results in multiple transcript variants

Immunogen: The antiserum was produced against synthesized peptide derived from the Internal region of human TNFSF4. AA range:31-80

Applications: WB,IHC-P,ELISA

Recommended Dilutions: WB: 1/500-1/1000 IHC: 1/50-1/100 ELISA: 1/10000

Host Species: Rabbit

Clonality: Rabbit Polyclonal

Clone ID: -

MW: Calculated MW: 21 kDa; Observed MW: 21 kDa

Isotype: IgG

Purification: Affinity Purified

Species Reactivity: Human

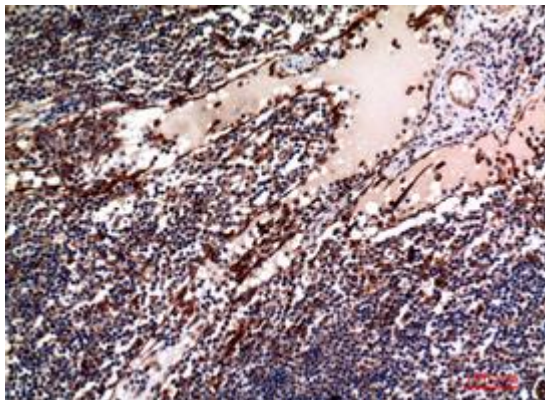
Conjugation: Unconjugated

Modification: Unmodified

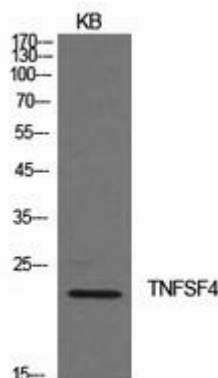
Constituents: PBS (without Mg²⁺ and Ca²⁺), pH 7.3 containing 50% glycerol, 0.5% BSA and 0.02% sodium azide

Research Areas: Immunology

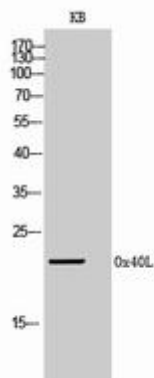
Storage & Shipping: Store at -20°C. Avoid repeated freezing and thawing



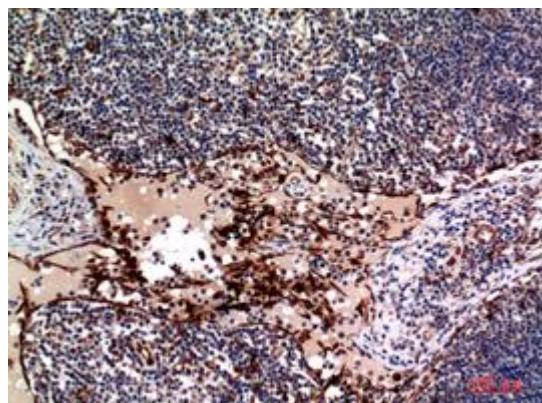
Immunohistochemistry analysis of paraffin-embedded Human lymph using OX40L antibody. High-pressure and temperature Sodium Citrate pH 6.0 was used for antigen retrieval.



Western blot analysis of OX40L in KB lysates using OX40L antibody.



Western blot analysis of OX40L in KB lysates using Ox40L antibody.



Immunohistochemistry analysis of paraffin-embedded Human lymph using OX40L antibody. High-pressure and temperature Sodium Citrate pH 6.0 was used for antigen retrieval.