

OXSM RABBIT PAB

Cat.#: S219470

Product Name: Anti-OXSM Rabbit Polyclonal Antibody

Synonyms: KS; CEM1; KASI; FASN2D

UNIPROT ID: Q9NWU1 (Gene Accession - BC008202)

Background: This gene encodes a beta-ketoacyl synthetase. The encoded enzyme is required for elongation of fatty acid chains in the mitochondria. Alternatively spliced transcript variants have been described.

Immunogen: Fusion protein of human OXSM

Applications: ELISA, WB, IHC

Recommended Dilutions: IHC: 150-300;WB: 200-1000;ELISA: 5000-10000

Host Species: Rabbit

Clonality: Rabbit Polyclonal

Isotype: Immunogen-specific rabbit IgG

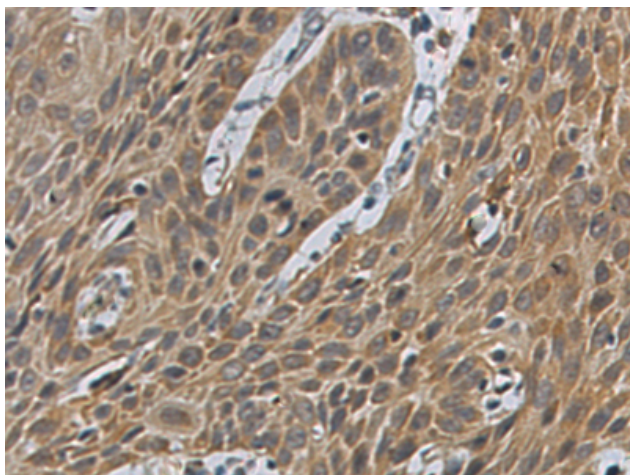
Purification: Antigen affinity purification

Species Reactivity: Human, Mouse

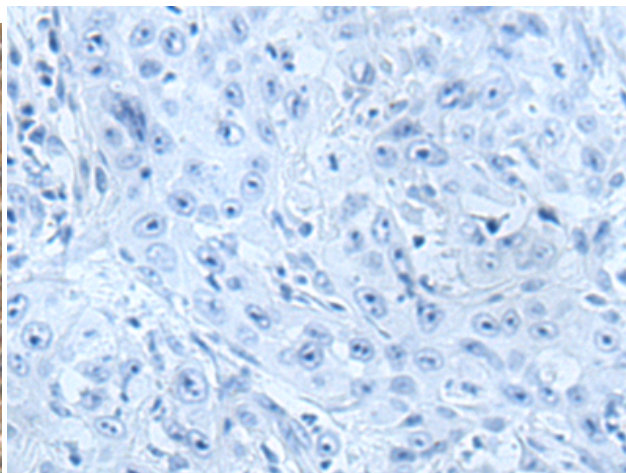
Constituents: PBS (without Mg²⁺ and Ca²⁺), pH 7.4, 150 mM NaCl, 0.05% Sodium Azide and 40% glycerol

Research Areas: Metabolism, Cardiovascular

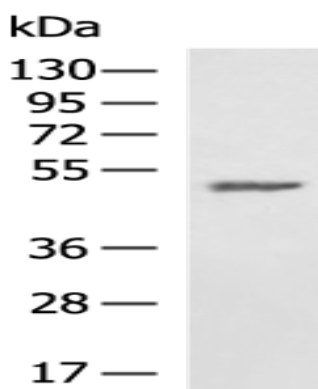
Storage & Shipping: Store at -20°C. Avoid repeated freezing and thawing



Immunohistochemistry analysis of paraffin embedded Human esophagus cancer tissue using 219470(OXSM Antibody) at a dilution of 1/130(Cytoplasm).



In comparison with the IHC on the left, the same paraffin-embedded Human esophagus cancer tissue is first treated with the fusion protein and then with 219470(Anti-OXSM Antibody) at dilution 1/130.



Gel: 8%SDS-PAGE, Lysate: 40 μ g;
Lane: HeLa cell lysate;
Primary antibody: 219470(OXSM Antibody) at dilution 1/400;
Secondary antibody: HRP-conjugated Goat anti rabbit IgG at 1/5000 dilution;
Exposure time: 30 seconds