

## P150 CAF1 RABBIT MAB

**Cat.#:** N262648

**Product Name:** Anti-p150 CAF1 Rabbit Monoclonal Antibody

**Synonyms:** CHAF1A; CAF; CAF1P150; Chromatin assembly factor 1 subunit A; CAF-1 subunit A; Chromatin assembly factor I p150 subunit; CAF-1 150 kDa subunit; CAF-1 p150; hp150

**UNIPROT ID:** Q13111

**Background:** Core component of the CAF-1 complex, a complex thought to mediate chromatin assembly in DNA replication and DNA repair. Assembles histone octamers onto replicating DNA in vitro. CAF-1 performs the first step of the nucleosome assembly process, bringing newly synthesized histones H3 and H4 to replicating DNA; histones H2A/H2B can bind to this chromatin precursor subsequent to DNA replication to complete the histone octamer.

**Immunogen:** A synthetic peptide of human p150 CAF1

**Applications:** WB,IHC-F,IHC-P,ICC/IF,IP

**Recommended Dilutions:** WB: 1/500-1/1000 IHC: 1/50-1/100 IF: 1/50-1/200 IP: 1/20

**Host Species:** Rabbit

**Clonality:** Rabbit Monoclonal

**Clone ID:** R06-3A5

**MW:** Calculated MW: 107 kDa; Observed MW: 150 kDa

**Isotype:** IgG

**Purification:** Affinity Purified

**Species Reactivity:** Human

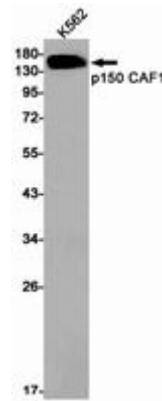
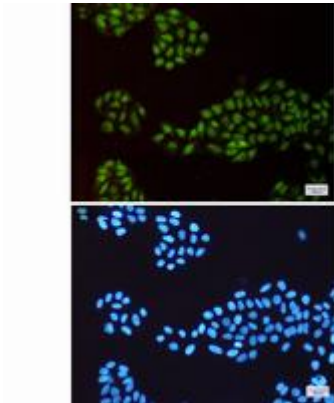
**Conjugation:** Unconjugated

**Modification:** Unmodified

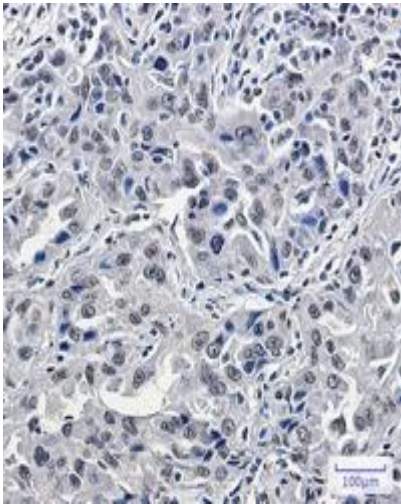
**Constituents:** PBS (without Mg<sup>2+</sup> and Ca<sup>2+</sup>), pH 7.3 containing 50% glycerol, 0.5% BSA and 0.02% sodium azide

**Research Areas:** Epigenetics and Nuclear Signaling

**Storage & Shipping:** Store at -20°C. Avoid repeated freezing and thawing



Immunocytochemistry analysis of p150 CAF1 (green) in HeLa using p150 CAF1 antibody, and DAPI (blue) Western blot analysis of p150 CAF1 in K562 lysates using p150 CAF1 antibody.



Immunohistochemistry analysis of paraffin-embedded Human lung cancer using p150 CAF1/CAF antibody. High-pressure and temperature Sodium Citrate pH 6.0 was used for antigen retrieval.