

## P16 ARC RABBIT MAB

**Cat.#:** N261700

**Product Name:** Anti-p16 ARC Rabbit Monoclonal Antibody

**Synonyms:** p16 Arc; ARPC5; ARC16; Arp2/3 protein complex subunit p16

**UNIPROT ID:** O15511

**Background:** Functions as component of the Arp2/3 complex which is involved in regulation of actin polymerization and together with an activating nucleation-promoting factor (NPF) mediates the formation of branched actin networks.

**Immunogen:** A synthetic peptide of human p16 ARC

**Applications:** WB,IHC-P,IP

**Recommended Dilutions:** WB: 1/500-1/1000 IHC: 1/50-1/100 IP: 1/20

**Host Species:** Rabbit

**Clonality:** Rabbit Monoclonal

**Clone ID:** R08-2B3

**MW:** Calculated MW: 16 kDa; Observed MW: 16 kDa

**Isotype:** IgG

**Purification:** Affinity Purified

**Species Reactivity:** Human,Mouse,Rat

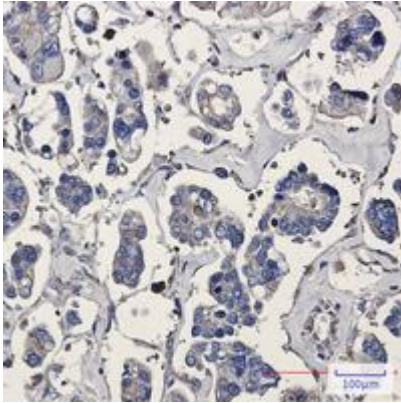
**Conjugation:** Unconjugated

**Modification:** Unmodified

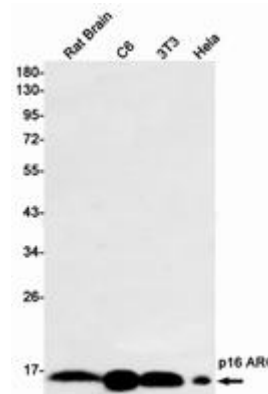
**Constituents:** PBS (without Mg<sup>2+</sup> and Ca<sup>2+</sup>), pH 7.3 containing 50% glycerol, 0.5% BSA and 0.02% sodium azide

**Research Areas:** Signal Transduction

**Storage & Shipping:** Store at -20°C. Avoid repeated freezing and thawing



Immunohistochemistry analysis of paraffin-embedded Human Cholangiocarcinoma using p16 ARC antibody. High-pressure and temperature Sodium Citrate pH 6.0 was used for antigen retrieval.



Western blot analysis of p16 ARC in rat Brain, C6, 3T3, HeLa lysates using p16 ARC antibody.