

P21 RABBIT PAB

Cat.#: N225003

Product Name: Anti-p21 Rabbit pAb

Synonyms: CDKN1A; CAP20; CDKN1; CIP1; MDA6; PIC1; SDI1; WAF1; Cyclin-dependent kinase inhibitor 1; CDK-interacting protein 1; Melanoma differentiation-associated protein 6; MDA-6; p21

UNIPROT ID: P38936

Background: The tumor suppressor protein p21 Waf1/Cip1 acts as an inhibitor of cell cycle progression. It functions in stoichiometric relationships forming heterotrimeric complexes with cyclins and cyclin-dependent kinases. In association with CDK2 complexes, it serves to inhibit kinase activity and block progression through G1/S. However, p21 may also enhance assembly and activity in complexes of CDK4 or CDK6 and cyclin D.

Immunogen: The antiserum was produced against synthesized peptide derived from human p21 Cip1. AA range:111-160

Applications: ICC/IF,WB,IHC-F,IHC-P,ELISA

Recommended Dilutions: WB: 1/500-1/1000 IHC: 1/50-1/100 IF: 1/50-1/200 ELISA: 1/10000

Host Species: Rabbit

Clonality: Rabbit Polyclonal

Clone ID: -

MW: Calculated MW: 18 kDa; Observed MW: 26 kDa

Isotype: IgG

Purification: Affinity Purified

Species Reactivity: Human,Mouse,Rat

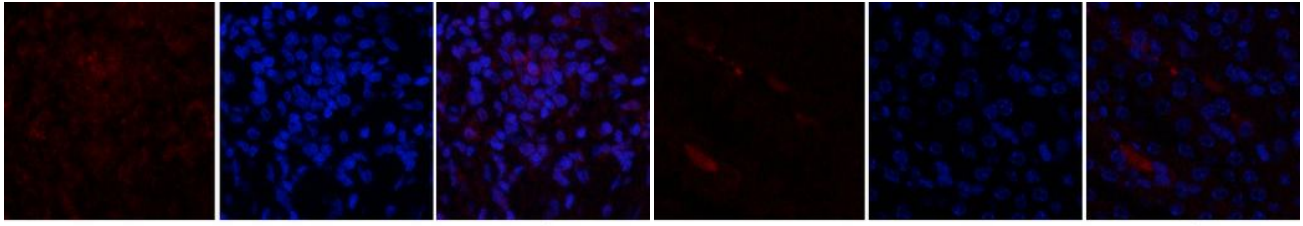
Conjugation: Unconjugated

Modification: Unmodified

Constituents: PBS (without Mg²⁺ and Ca²⁺), pH 7.3 containing 50% glycerol, 0.5% BSA and 0.02% sodium azide

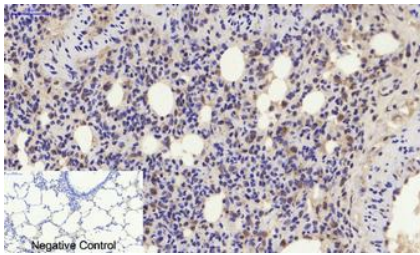
Research Areas: Cell Biology

Storage & Shipping: Store at -20°C. Avoid repeated freezing and thawing

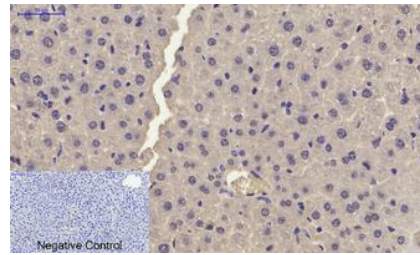


Immunofluorescence analysis of p21 in rat lung tissue using p21 antibody (red), and DAPI (blue).

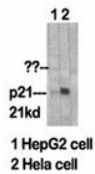
Immunofluorescence analysis of p21 in mouse kidney tissue using p21 antibody (red), and DAPI (blue).



Immunohistochemistry analysis of paraffin-embedded rat lung tissue using p21 antibody. High-pressure and temperature Sodium Citrate pH 6.0 was used for antigen retrieval. Negative control was used by secondary antibody only.



Immunohistochemistry analysis of paraffin-embedded mouse liver tissue using p21 antibody. High-pressure and temperature Sodium Citrate pH 6.0 was used for antigen retrieval. Negative control was used by secondary antibody only.



Western blot analysis of p21 in various lysates using p21 antibody