

P23 RABBIT MAB

Cat.#: N263473

Product Name: Anti-p23 Rabbit Monoclonal Antibody

Synonyms: PTGES3; P23; TEBP; Prostaglandin E synthase 3; Cytosolic prostaglandin E2 synthase; cPGES; Hsp90 co-chaperone; Progesterone receptor complex p23; Telomerase-binding protein p23

UNIPROT ID: Q15185

Background: Molecular chaperone that localizes to genomic response elements in a hormone-dependent manner and disrupts receptor-mediated transcriptional activation, by promoting disassembly of transcriptional regulatory complexes.

Immunogen: A synthetic peptide of human p23/PTGES3

Applications: WB, ICC/IF, IP

Recommended Dilutions: WB: 1/500-1/1000 IF: 1/50-1/200 IP: 1/20

Host Species: Rabbit

Clonality: Rabbit Monoclonal

Clone ID: R03-2A6

MW: Calculated MW: 19 kDa; Observed MW: 23 kDa

Isotype: IgG

Purification: Affinity Purified

Species Reactivity: Human, Mouse, Rat

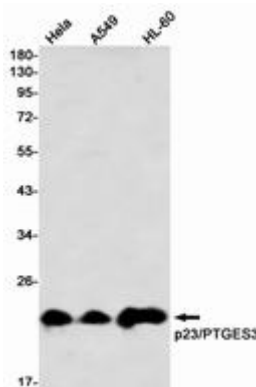
Conjugation: Unconjugated

Modification: Unmodified

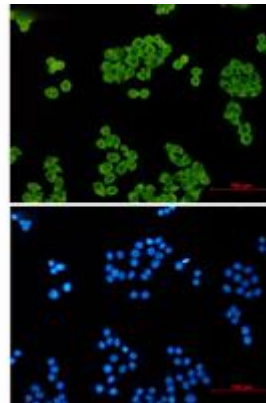
Constituents: PBS (without Mg²⁺ and Ca²⁺), pH 7.3 containing 50% glycerol, 0.5% BSA and 0.02% sodium azide

Research Areas: Epigenetics and Nuclear Signaling

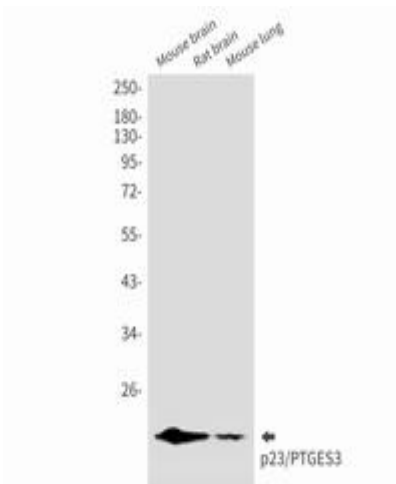
Storage & Shipping: Store at -20°C. Avoid repeated freezing and thawing



Western blot analysis of p23/PTGES3 in HeLa, A549, HL-60 lysates using p23/PTGES3 antibody



Immunocytochemistry analysis of p23 (green) in HeLa using p23 antibody, and DAPI (blue).



Western blot analysis of p23/PTGES3 in mouse brain, rat brain, mouse lung lysates using p23/PTGES3 antibody.