

## P2RY6 RABBIT PAB

**Cat.#:** S219960

**Product Name:** Anti-P2RY6 Rabbit Polyclonal Antibody

**Synonyms:** P2Y6

**UNIPROT ID:** Q15077 (Gene Accession - NP\_004145 )

**Background:** The product of this gene belongs to the family of G-protein coupled receptors. This family has several receptor subtypes with different pharmacological selectivity, which overlaps in some cases, for various adenosine and uridine nucleotides. This receptor is responsive to UDP, partially responsive to UTP and ADP, and not responsive to ATP. Four transcript variants encoding the same isoform have been identified for this gene

**Immunogen:** Synthetic peptide of human P2RY6

**Applications:** ELISA, WB, IHC

**Recommended Dilutions:** IHC: 100-300;WB: 200-1000;ELISA: 1000-5000

**Host Species:** Rabbit

**Clonality:** Rabbit Polyclonal

**Isotype:** Immunogen-specific rabbit IgG

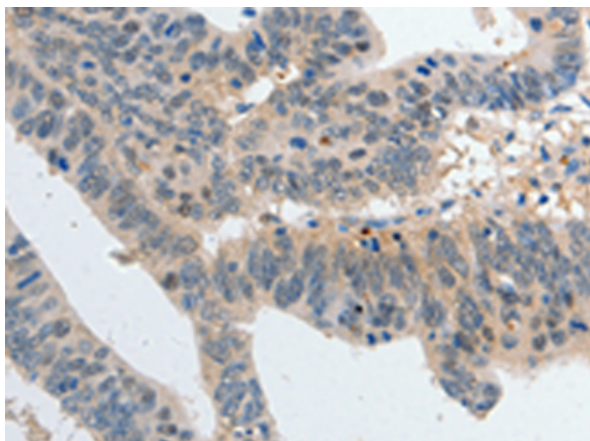
**Purification:** Antigen affinity purification

**Species Reactivity:** Human, Mouse, Rat

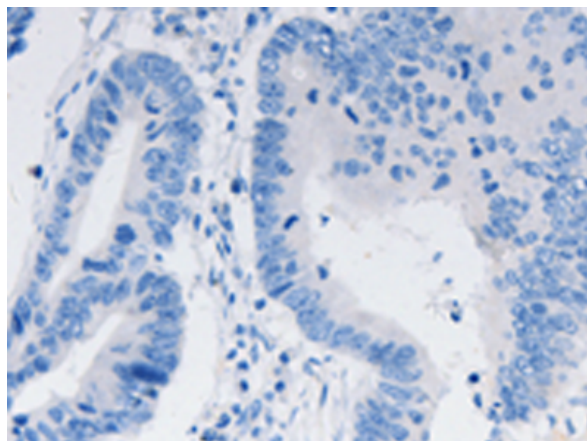
**Constituents:** PBS (without Mg<sup>2+</sup> and Ca<sup>2+</sup>), pH 7.4, 150 mM NaCl, 0.05% Sodium Azide and 40% glycerol

**Research Areas:** Signal Transduction

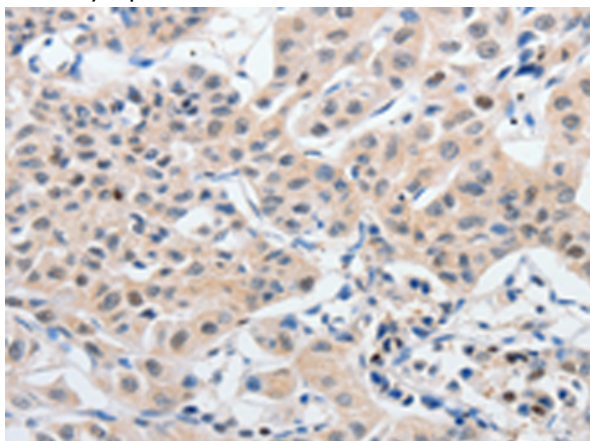
**Storage & Shipping:** Store at -20°C. Avoid repeated freezing and thawing



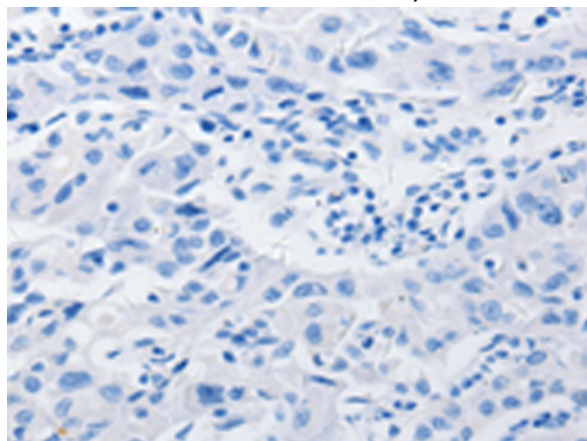
Immunohistochemistry analysis of paraffin embedded Human colon cancer tissue using 219960(P2RY6 Antibody) at a dilution of 1/80(Cytoplasm).



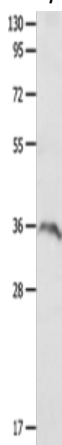
In comparison with the IHC on the left, the same paraffin-embedded Human colon cancer tissue is first treated with the synthetic peptide and then with 219960(Anti-P2RY6 Antibody) at dilution 1/80.



The image on the left is immunohistochemistry of paraffin-embedded Human lung cancer tissue using 219960(Anti-P2RY6 Antibody) at a dilution of 1/80.



In comparison with the IHC on the left, the same paraffin-embedded Human lung cancer tissue is first treated with synthetic peptide and then with D260686(Anti-P2RY6 Antibody) at dilution 1/80.



Gel: 10%SDS-PAGE, Lysate: 40 µg;  
Lane: Mouse spleen tissue;  
Primary antibody: 219960(P2RY6 Antibody) at dilution 1/650;  
Secondary antibody: Goat anti rabbit IgG at 1/8000 dilution;  
Exposure time: 1 minute



# Product Description

Pioneering GTPase and Oncogene Product Development since 2010

---