

## P2Y12 RABBIT MAB

**Cat.#:** N263475

**Product Name:** Anti-P2Y12 Rabbit Monoclonal Antibody

**Synonyms:** HORK3; P2Y12; ADPG-R; BDPLT8; SP1999; P2T(AC); P2Y(AC); P2Y(12)R; P2Y(ADP); P2Y(cyc)

**UNIPROT ID:** Q9H244

**Background:** Receptor for ADP and ATP coupled to G-proteins that inhibit the adenylyl cyclase second messenger system.

**Immunogen:** A synthetic peptide of human P2Y12

**Applications:** WB,IP

**Recommended Dilutions:** WB: 1/500-1/1000 IP: 1/20

**Host Species:** Rabbit

**Clonality:** Rabbit Monoclonal

**Clone ID:** R02-2E1

**MW:** Calculated MW: 39 kDa; Observed MW: 52 kDa

**Isotype:** IgG

**Purification:** Affinity Purified

**Species Reactivity:** Human

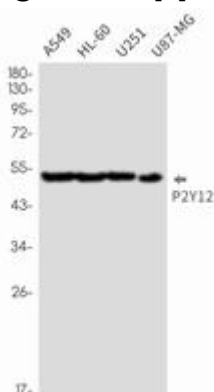
**Conjugation:** Unconjugated

**Modification:** Unmodified

**Constituents:** PBS (without Mg<sup>2+</sup> and Ca<sup>2+</sup>), pH 7.3 containing 50% glycerol, 0.5% BSA and 0.02% sodium azide

**Research Areas:** Neuroscience P2Y12

**Storage & Shipping:** Store at -20°C. Avoid repeated freezing and thawing



Western blot analysis of P2Y12 in A549, HL-60, U251, U87-MG lysates using P2Y12 antibody.



# Product Description

Pioneering GTPase and Oncogene Product Development since 2010

---