

PACSIN3 RABBIT MAB

Cat.#: N263137

Product Name: Anti-PACSIN3 Rabbit Monoclonal Antibody

Synonyms: SDPIII

UNIPROT ID: Q9UKS6

Background: Plays a role in endocytosis and regulates internalization of plasma membrane proteins.

Immunogen: A synthetic peptide of human PACSIN3

Applications: WB,IHC-F,IHC-P,ICC/IF,IP

Recommended Dilutions: WB: 1/500-1/1000 IHC: 1/50-1/100 IF: 1/50-1/200 IP: 1/20

Host Species: Rabbit

Clonality: Rabbit Monoclonal

Clone ID: R04-1F1

MW: Calculated MW: 48 kDa; Observed MW: 48 kDa

Isotype: IgG

Purification: Affinity Purified

Species Reactivity: Human

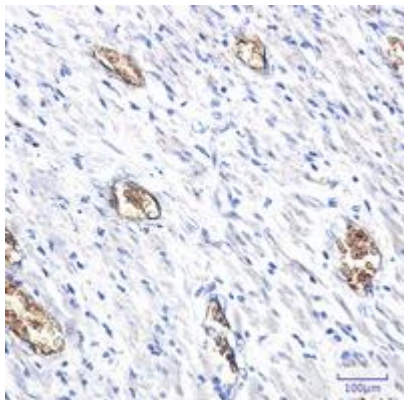
Conjugation: Unconjugated

Modification: Unmodified

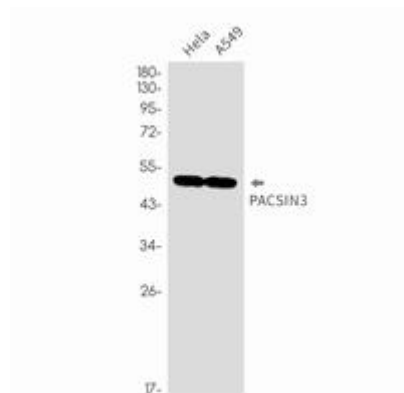
Constituents: PBS (without Mg²⁺ and Ca²⁺), pH 7.3 containing 50% glycerol, 0.5% BSA and 0.02% sodium azide

Research Areas: -

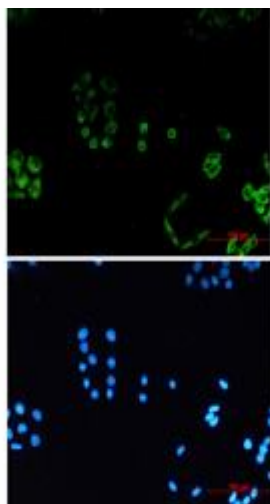
Storage & Shipping: Store at -20°C. Avoid repeated freezing and thawing



Immunohistochemistry analysis of paraffin-embedded Human colon cancer using PACSIN3 antibody. High-pressure and temperature Sodium Citrate pH 6.0 was used for antigen retrieval.



Western blot analysis of PACSIN3 in HeLa, A549 lysates using PACSIN3 antibody.



Immunocytochemistry analysis of PACSIN3 (green) in HeLa using PACSIN3 antibody, and DAPI (blue)