

## PADI4 RABBIT PAB

**Cat.#:** S216707

**Product Name:** Anti-PADI4 Rabbit Polyclonal Antibody

**Synonyms:** PAD; PAD4; PDI4; PDI5; PADI5

**UNIPROT ID:** Q9UM07 (Gene Accession - BC025718 )

**Background:** This gene is a member of a gene family which encodes enzymes responsible for the conversion of arginine residues to citrulline residues. This gene may play a role in granulocyte and macrophage development leading to inflammation and immune response. [provided by RefSeq, Jul 2008]

**Immunogen:** Fusion protein of human PADI4

**Applications:** ELISA, IHC

**Recommended Dilutions:** IHC: 100-300; ELISA: 5000-10000

**Host Species:** Rabbit

**Clonality:** Rabbit Polyclonal

**Isotype:** Immunogen-specific rabbit IgG

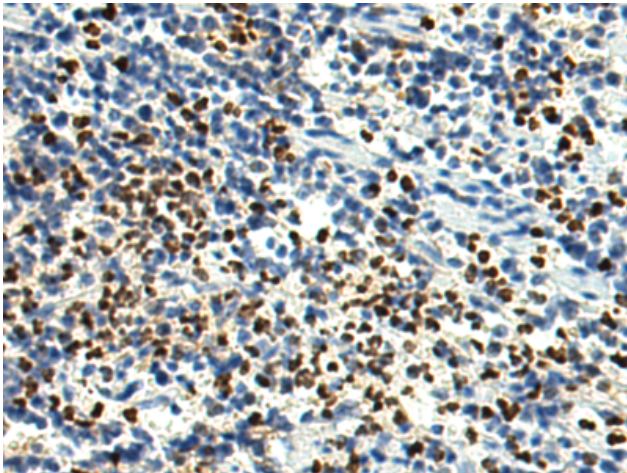
**Purification:** Antigen affinity purification

**Species Reactivity:** Human

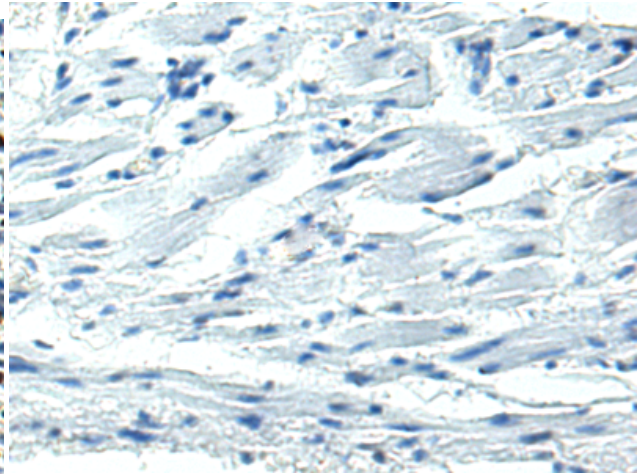
**Constituents:** PBS (without Mg<sup>2+</sup> and Ca<sup>2+</sup>), pH 7.4, 150 mM NaCl, 0.05% Sodium Azide and 40% glycerol

**Research Areas:** Metabolism, Epigenetics and Nuclear Signaling

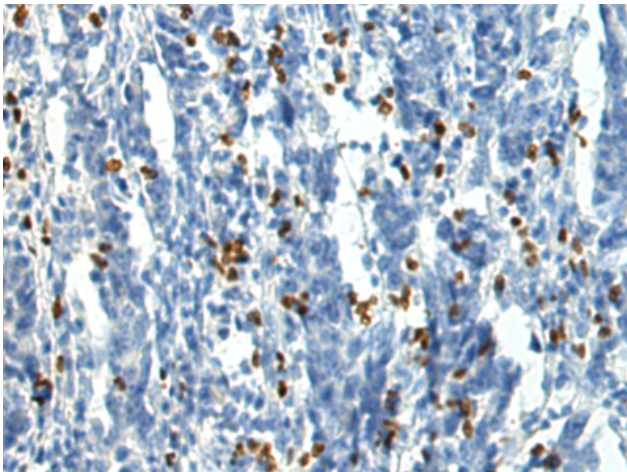
**Storage & Shipping:** Store at -20°C. Avoid repeated freezing and thawing



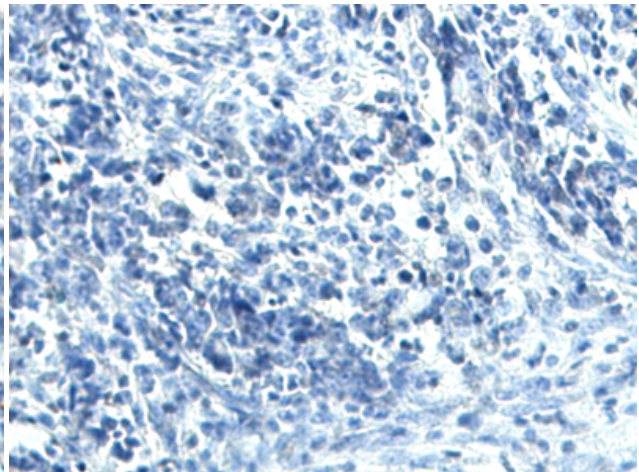
Immunohistochemistry analysis of paraffin embedded Human esophagus cancer tissue using 216707(PADI4 Antibody) at a dilution of 1/160(Nucleus).



In comparison with the IHC on the left, the same paraffin-embedded Human esophagus cancer tissue is first treated with the fusion protein and then with 216707(Anti-PADI4 Antibody) at dilution 1/160.



The image on the left is immunohistochemistry of paraffin-embedded Human gastric cancer tissue using 216707(Anti-PADI4 Antibody) at a dilution of 1/160.



In comparison with the IHC on the left, the same paraffin-embedded Human gastric cancer tissue is first treated with fusion protein and then with D221092(Anti-PADI4 Antibody) at dilution 1/160.