

PAFAH1B2 RABBIT PAB

Cat.#: S219026

Product Name: Anti-PAFAH1B2 Rabbit Polyclonal Antibody

Synonyms: HEL-S-303

UNIPROT ID: P68402 (Gene Accession - BC000398)

Background: Platelet-activating factor acetylhydrolase (PAFAH) inactivates platelet-activating factor (PAF) into acetate and LYSO-PAF. This gene encodes the beta subunit of PAFAH, the other subunits are alpha and gamma. Multiple alternatively spliced transcript variants have been described for this gene.

Immunogen: Fusion protein of human PAFAH1B2

Applications: ELISA, IHC

Recommended Dilutions: IHC: 50-300; ELISA: 5000-10000

Host Species: Rabbit

Clonality: Rabbit Polyclonal

Isotype: Immunogen-specific rabbit IgG

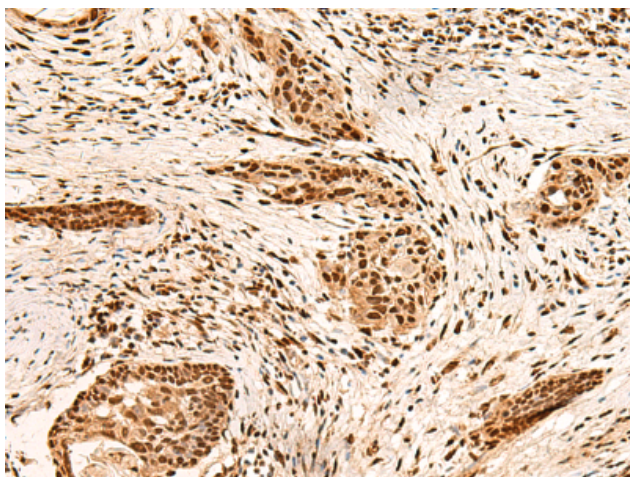
Purification: Antigen affinity purification

Species Reactivity: Human, Mouse, Rat

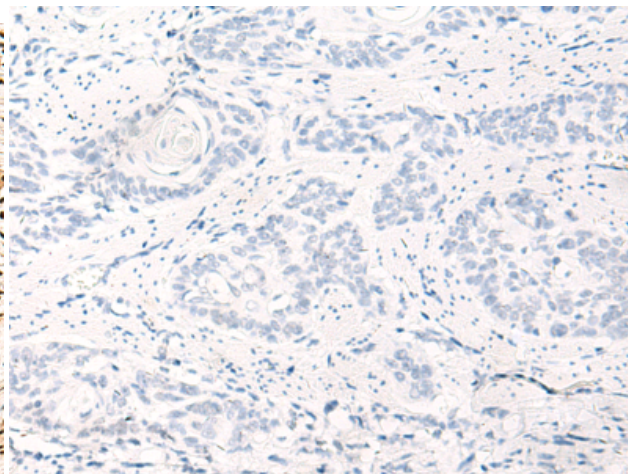
Constituents: PBS (without Mg²⁺ and Ca²⁺), pH 7.4, 150 mM NaCl, 0.05% Sodium Azide and 40% glycerol

Research Areas: Metabolism, Cardiovascular

Storage & Shipping: Store at -20°C. Avoid repeated freezing and thawing



Immunohistochemistry analysis of paraffin embedded Human esophagus cancer tissue using 219026 (PAFAH1B2 Antibody) at a dilution of 1/60 (Nucleus).



In comparison with the IHC on the left, the same paraffin-embedded Human esophagus cancer tissue is first treated with the fusion protein and then with 219026 (Anti-PAFAH1B2 Antibody) at dilution 1/60.