

PAGE5 RABBIT PAB

Cat.#: S217666

Product Name: Anti-PAGE5 Rabbit Polyclonal Antibody

Synonyms: CT16; CT16.1; CT16.2; GAGEE1; PAGE-5

UNIPROT ID: Q96GU1 (Gene Accession - BC009230)

Background: This gene is a member of the GAGE family, which is expressed in a variety of tumors and in some fetal and reproductive tissues. The protein encoded by this gene shares a sequence similarity with other GAGE/PAGE proteins. It may also belong to a family of CT (cancer-testis) antigens. Multiple alternatively spliced transcript variants encoding distinct isoforms have been found for this gene, but the biological validity of some variants have not been determined.

Immunogen: Fusion protein of human PAGE5

Applications: ELISA, IHC

Recommended Dilutions: IHC: 50-200; ELISA: 2000-5000

Host Species: Rabbit

Clonality: Rabbit Polyclonal

Isotype: Immunogen-specific rabbit IgG

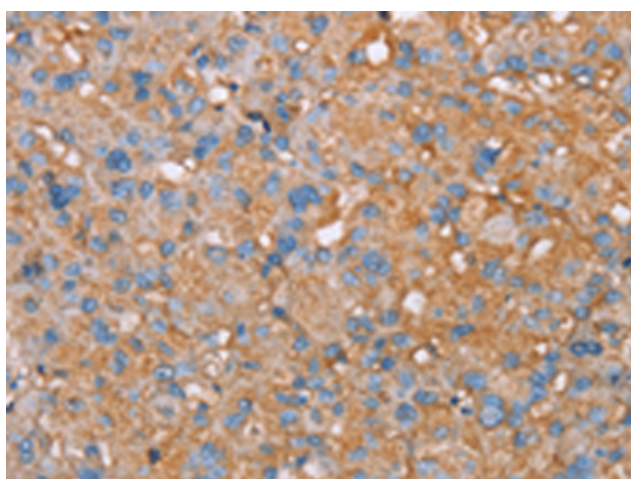
Purification: Antigen affinity purification

Species Reactivity: Human

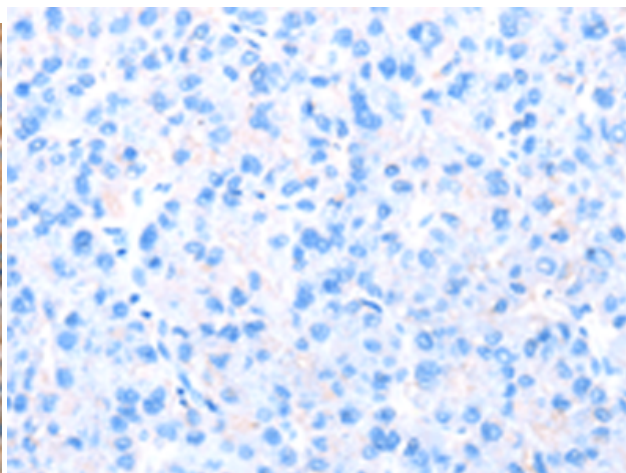
Constituents: PBS (without Mg²⁺ and Ca²⁺), pH 7.4, 150 mM NaCl, 0.05% Sodium Azide and 40% glycerol

Research Areas: Cancer

Storage & Shipping: Store at -20°C. Avoid repeated freezing and thawing



Immunohistochemistry analysis of paraffin embedded Human liver cancer tissue using 217666(PAGE5 Antibody) at a dilution of 1/55(Cytoplasm).



In comparison with the IHC on the left, the same paraffin-embedded Human liver cancer tissue is first treated with the fusion protein and then with 217666(Anti-PAGE5 Antibody) at dilution 1/55.