

PALB2 RABBIT PAB

Cat.#: S220162

Product Name: Anti-PALB2 Rabbit Polyclonal Antibody

Synonyms: FANCN; PNCA3

UNIPROT ID: Q86YC2 (Gene Accession - NP_078951)

Background: This gene encodes a protein that may function in tumor suppression. This protein binds to and colocalizes with the breast cancer 2 early onset protein (BRCA2) in nuclear foci and likely permits the stable intranuclear localization and accumulation of BRCA2.

Immunogen: Synthetic peptide of human PALB2

Applications: ELISA, WB, IHC

Recommended Dilutions: IHC: 100-300;WB: 1000-5000;ELISA: 5000-10000

Host Species: Rabbit

Clonality: Rabbit Polyclonal

Isotype: Immunogen-specific rabbit IgG

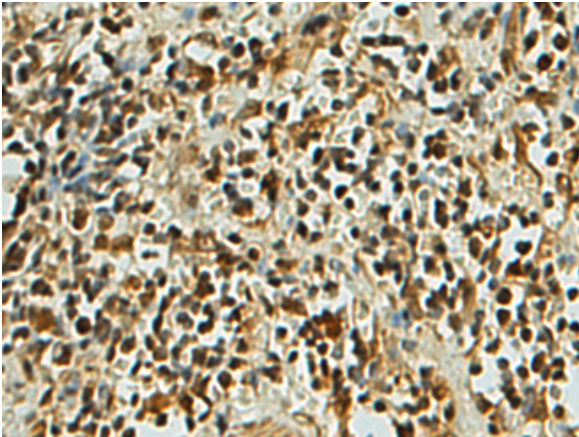
Purification: Antigen affinity purification

Species Reactivity: Human, Mouse

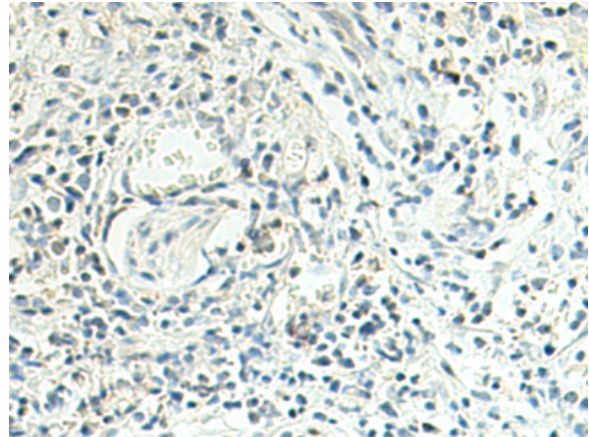
Constituents: PBS (without Mg²⁺ and Ca²⁺), pH 7.4, 150 mM NaCl, 0.05% Sodium Azide and 40% glycerol

Research Areas: Epigenetics and Nuclear Signaling, Cancer

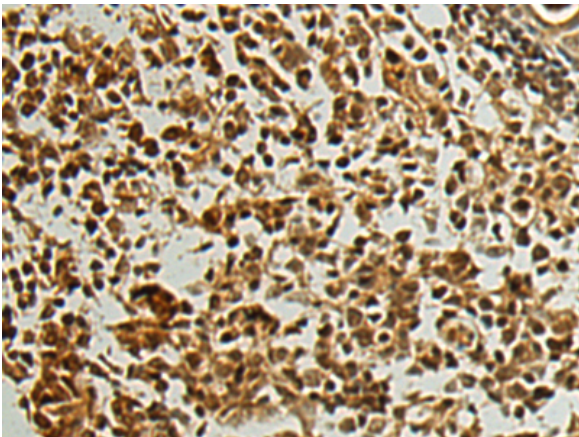
Storage & Shipping: Store at -20°C. Avoid repeated freezing and thawing



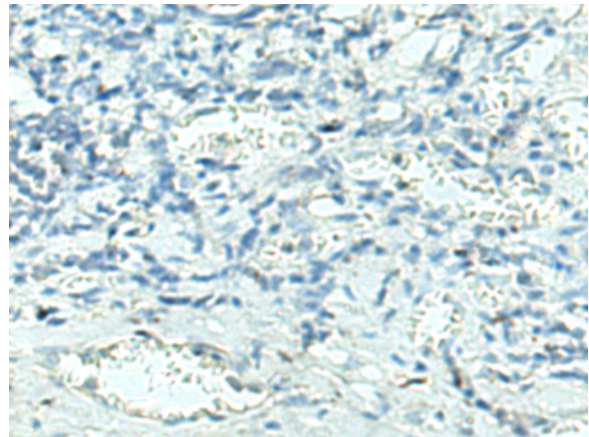
Immunohistochemistry analysis of paraffin embedded Human esophagus cancer tissue using 220162 (PALB2 Antibody) at a dilution of 1/115 (Nucleus).



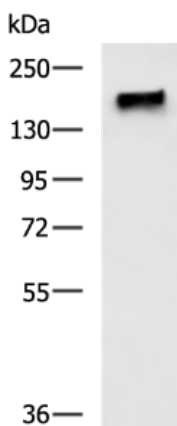
In comparison with the IHC on the left, the same paraffin-embedded Human esophagus cancer tissue is first treated with the synthetic peptide and then with 220162 (Anti-PALB2 Antibody) at dilution 1/115.



The image on the left is immunohistochemistry of paraffin-embedded Human thyroid cancer tissue using 220162 (Anti-PALB2 Antibody) at a dilution of 1/115.



In comparison with the IHC on the left, the same paraffin-embedded Human thyroid cancer tissue is first treated with synthetic peptide and then with D261065 (Anti-PALB2 Antibody) at dilution 1/115.



Gel: 6% SDS-PAGE, Lysate: 40 µg;
Lane: HeLa cell lysate;
Primary antibody: 220162 (PALB2 Antibody) at dilution 1/1600;
Secondary antibody: HRP-conjugated Goat anti rabbit IgG at 1/5000 dilution;
Exposure time: 1 minute



Product Description

Pioneering GTPase and Oncogene Product Development since 2010
