

## PAR4 RABBIT MAB

**Cat.#:** N263480

**Product Name:** Anti-PAR4 Rabbit Monoclonal Antibody

**Synonyms:** PAWR; PAR4; PRKC apoptosis WTI regulator protein; Prostate apoptosis response 4 protein; Par-4

**UNIPROT ID:** Q96IZ0

**Background:** Pro-apoptotic protein capable of selectively inducing apoptosis in cancer cells, sensitizing the cells to diverse apoptotic stimuli and causing regression of tumors in animal models. Induces apoptosis in certain cancer cells by activation of the Fas prodeath pathway and coparallel inhibition of NF-kappa-B transcriptional activity.

**Immunogen:** A synthetic peptide of human PAR4

**Applications:** WB,IP

**Recommended Dilutions:** WB: 1/500-1/1000 IP: 1/20

**Host Species:** Rabbit

**Clonality:** Rabbit Monoclonal

**Clone ID:** R01-8C0

**MW:** Calculated MW: 37 kDa; Observed MW: 41 kDa

**Isotype:** IgG

**Purification:** Affinity Purified

**Species Reactivity:** Human,Mouse

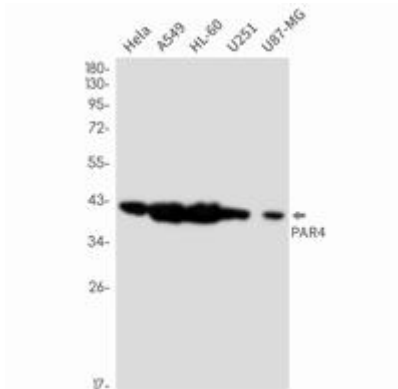
**Conjugation:** Unconjugated

**Modification:** Unmodified

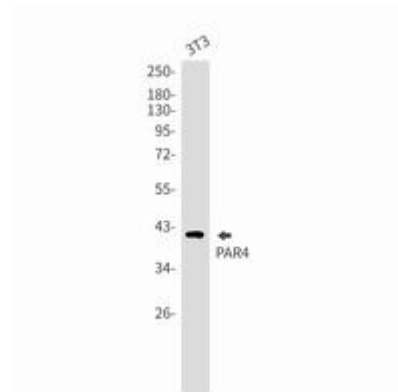
**Constituents:** PBS (without Mg<sup>2+</sup> and Ca<sup>2+</sup>), pH 7.3 containing 50% glycerol, 0.5% BSA and 0.02% sodium azide

**Research Areas:** Cell Biology

**Storage & Shipping:** Store at -20°C. Avoid repeated freezing and thawing



Western blot analysis of PAR4 in HeLa, A549, HL-60, U251, U87-MG lysates using PAR4 antibody.



Western blot analysis of PAR4 in 3T3 lysates using PAR4 antibody.