

## PARATHYROID HORMONE RABBIT PAB

**Cat.#:** N225837

**Product Name:** Anti-Parathyroid Hormone Rabbit pAb

**Synonyms:** hPTH; Parathormone; Parathyrin; Parathyroid hormone I; Prepro PTH; Preproparathyroid hormone; PTH1; PTH1 receptor; PTH1R; PTHR1

**UNIPROT ID:** P01270

**Background:** PTH elevates calcium level by dissolving the salts in bone and preventing their renal excretion. Stimulates [1-<sup>14</sup>C]-2-deoxy-D-glucose (2DG) transport and glycogen synthesis in osteoblastic cells.

**Immunogen:** A synthesized peptide derived from human Parathyroid Hormone

**Applications:** WB,IHC-P

**Recommended Dilutions:** WB: 1/500-1/1000 IHC: 1/50-1/100

**Host Species:** Rabbit

**Clonality:** Rabbit Polyclonal

**Clone ID:** -

**MW:** Calculated MW: 13 kDa; Observed MW: 36 kDa

**Isotype:** IgG

**Purification:** Affinity Chromatography

**Species Reactivity:** Human

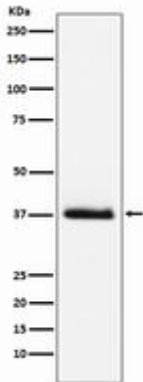
**Conjugation:** Unconjugated

**Modification:** Unmodified

**Constituents:** PBS (without Mg<sup>2+</sup> and Ca<sup>2+</sup>), pH 7.3 containing 50% glycerol, 0.5% BSA and 0.02% sodium azide

**Research Areas:** Neuroscience Parathyroid Hormone

**Storage & Shipping:** Store at -20°C. Avoid repeated freezing and thawing



Western blot analysis of Parathyroid Hormone in Human Parathyroid Hormone recombinant protein using Parathyroid Hormone antibody.