

PARP1 RABBIT PAB

Cat.#: S220165

Product Name: Anti-PARP1 Rabbit Polyclonal Antibody

Synonyms: PARP; PARS; PPOL; ADPRT; ARTD1; ADPRT1; PARP-1; ADPRT 1; pADPRT-1; Poly-PARP

UNIPROT ID: P09874 (Gene Accession - NP_001609.2)

Background: This gene encodes a chromatin-associated enzyme, poly(ADP-ribosyl)transferase, which modifies various nuclear proteins by poly(ADP-ribosyl)ation. The modification is dependent on DNA and is involved in the regulation of various important cellular processes such as differentiation, proliferation, and tumor transformation and also in the regulation of the molecular events involved in the recovery of cell from DNA damage. In addition, this enzyme may be the site of mutation in Fanconi anemia, and may participate in the pathophysiology of type I diabetes.

Immunogen: Synthetic peptide of human PARP1

Applications: ELISA, WB, IHC

Recommended Dilutions: IHC: 50-200;WB: 500-2000;ELISA: 2000-5000

Host Species: Rabbit

Clonality: Rabbit Polyclonal

Isotype: Immunogen-specific rabbit IgG

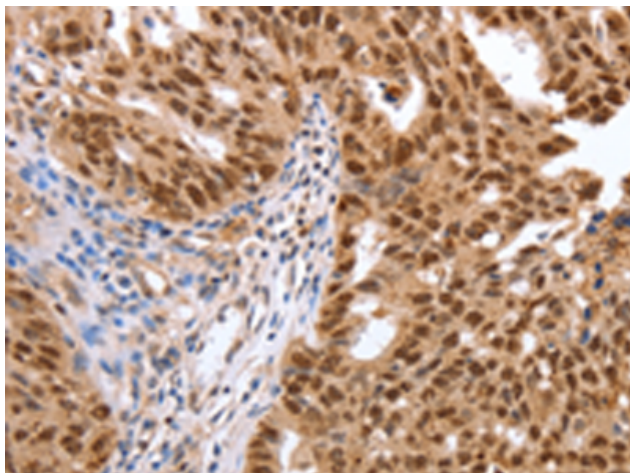
Purification: Antigen affinity purification

Species Reactivity: Human, Mouse, Rat

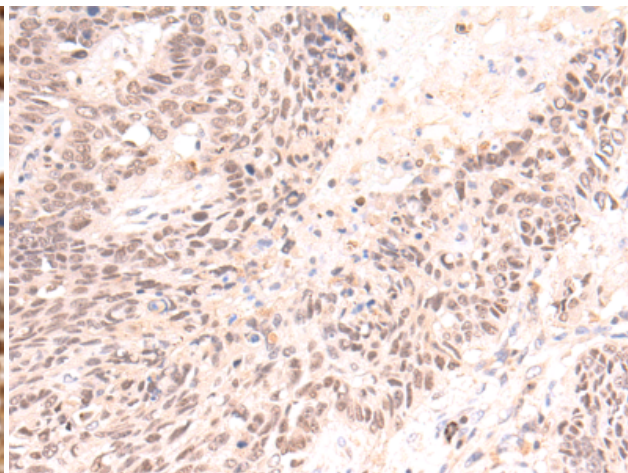
Constituents: PBS (without Mg²⁺ and Ca²⁺), pH 7.4, 150 mM NaCl, 0.05% Sodium Azide and 40% glycerol

Research Areas: Epigenetics and Nuclear Signaling, Cancer

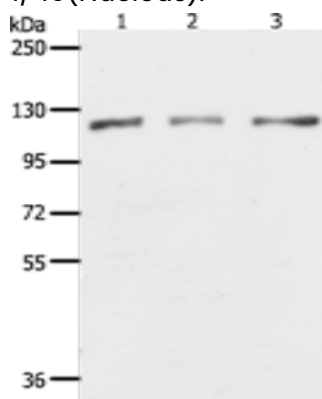
Storage & Shipping: Store at -20°C. Avoid repeated freezing and thawing



Immunohistochemistry analysis of paraffin-embedded Human tonsil tissue using 220165(PARP1 Antibody) at a dilution of 1/40(Nucleus).



Immunohistochemistry analysis of paraffin-embedded Human lung cancer tissue using 220165(Anti-PARP1 Antibody) at a dilution of 1/40.



Gel: 8%SDS-PAGE, Lysate: 40 μ g;
Lane 1-3: HeLa, K562 and Jurkat cell lysates;
Primary antibody: 220165(PARP1 Antibody) at dilution 1/350;
Secondary antibody: Goat anti rabbit IgG at 1/8000 dilution;
Exposure time: 1 second