

## PARP8 RABBIT PAB

**Cat.#:** S220782

**Product Name:** Anti-PARP8 Rabbit Polyclonal Antibody

**Synonyms:** ARTD16; pART16

**UNIPROT ID:** Q8N3A8 (Gene Accession - NP\_001171526 )

**Background:** Enables protein ADP-ribosylase activity. Involved in protein auto-ADP-ribosylation and protein mono-ADP-ribosylation. [provided by Alliance of Genome Resources, Apr 2022]

**Immunogen:** Synthetic peptide of human PARP8

**Applications:** ELISA, IHC

**Recommended Dilutions:** IHC: 50-200; ELISA: 5000-10000

**Host Species:** Rabbit

**Clonality:** Rabbit Polyclonal

**Isotype:** Immunogen-specific rabbit IgG

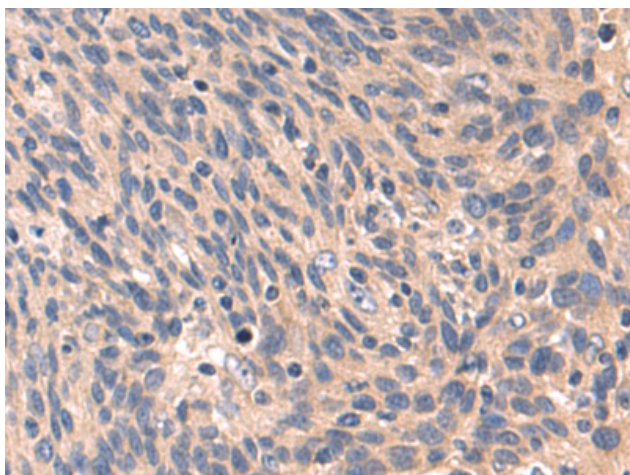
**Purification:** Antigen affinity purification

**Species Reactivity:** Human, Mouse

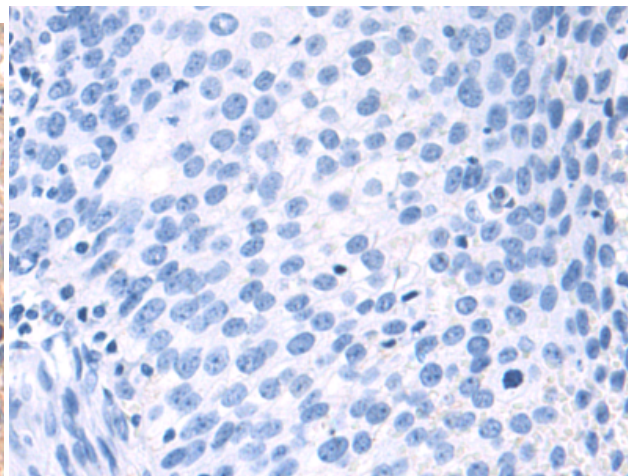
**Constituents:** PBS (without Mg<sup>2+</sup> and Ca<sup>2+</sup>), pH 7.4, 150 mM NaCl, 0.05% Sodium Azide and 40% glycerol

**Research Areas:** Epigenetics and Nuclear Signaling

**Storage & Shipping:** Store at -20°C. Avoid repeated freezing and thawing



Immunohistochemistry analysis of paraffin embedded Human cervical cancer tissue using 220782(PARP8 Antibody) at a dilution of 1/60(Cytoplasm).



In comparison with the IHC on the left, the same paraffin-embedded Human cervical cancer tissue is first treated with the synthetic peptide and then with 220782(Anti-PARP8 Antibody) at dilution 1/60.