

## PAX8 RABBIT PAB

**Cat.#:** S210520

**Product Name:** Anti-PAX8 Rabbit Polyclonal Antibody

**Synonyms:**

**UNIPROT ID:** Q06710 (Gene Accession - BC001060 )

**Background:** This gene encodes a member of the paired box (PAX) family of transcription factors. Members of this gene family typically encode proteins that contain a paired box domain, an octapeptide, and a paired-type homeodomain. This nuclear protein is involved in thyroid follicular cell development and expression of thyroid-specific genes. Mutations in this gene have been associated with thyroid dysgenesis, thyroid follicular carcinomas and atypical follicular thyroid adenomas. Alternatively spliced transcript variants encoding different isoforms have been described.

**Immunogen:** Fusion protein of human PAX8

**Applications:** ELISA, WB, IHC

**Recommended Dilutions:** IHC: 15-50;WB: 200-1000;ELISA: 1000-2000

**Host Species:** Rabbit

**Clonality:** Rabbit Polyclonal

**Isotype:** Immunogen-specific rabbit IgG

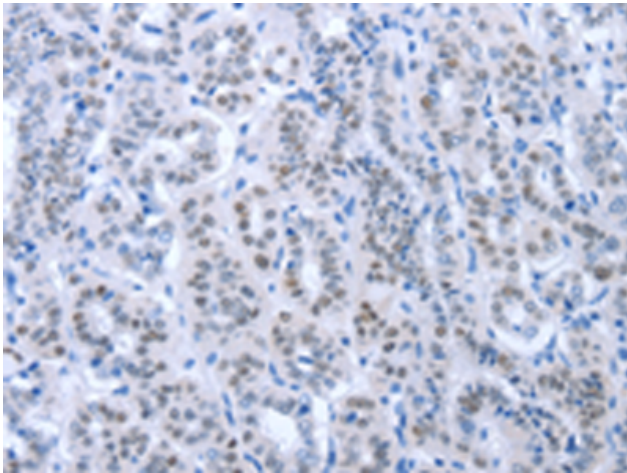
**Purification:** Antigen affinity purification

**Species Reactivity:** Human, Mouse, Rat

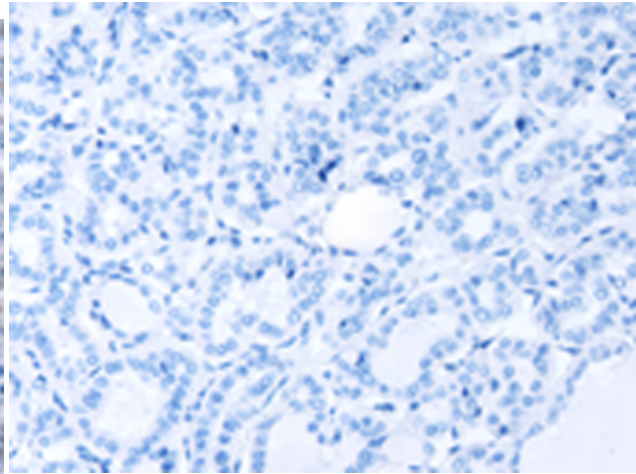
**Constituents:** PBS (without Mg<sup>2+</sup> and Ca<sup>2+</sup>), pH 7.4, 150 mM NaCl, 0.05% Sodium Azide and 40% glycerol

**Research Areas:** Epigenetics and Nuclear Signaling, Neuroscience

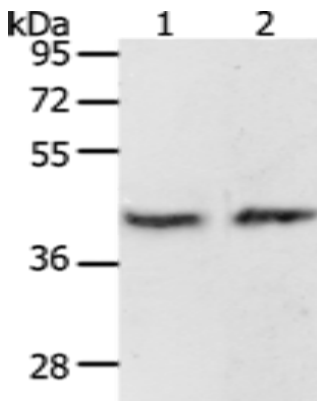
**Storage & Shipping:** Store at -20°C. Avoid repeated freezing and thawing



Immunohistochemistry analysis of paraffin embedded Human thyroid cancer tissue using 210520(PAX8 Antibody) at a dilution of 1/35(Nucleus).



In comparison with the IHC on the left, the same paraffin-embedded Human thyroid cancer tissue is first treated with the fusion protein and then with 210520(Anti-PAX8 Antibody) at dilution 1/35.



Gel: 10%SDS-PAGE, Lysate: 40  $\mu$ g;  
Lane 1-2: MCF7 cells, mouse brain tissue;  
Primary antibody: 210520(PAX8 Antibody) at dilution 1/250;  
Secondary antibody: Goat anti rabbit IgG at 1/8000 dilution;  
Exposure time: 2 minutes