

## PAXIP1 RABBIT PAB

**Cat.#:** S218913

**Product Name:** Anti-PAXIP1 Rabbit Polyclonal Antibody

**Synonyms:** PTIP; TNRC2; CAGF28; CAGF29; PACIP1; PAXIP1L

**UNIPROT ID:** Q6ZW49 (Gene Accession - BC033781 )

**Background:** This gene is a member of the paired box (PAX) gene family and encodes a nuclear protein with six BRCT (breast cancer carboxy-terminal) domains. This protein plays a critical role in maintaining genome stability, condensation of chromatin and progression through mitosis.

**Immunogen:** Fusion protein of human PAXIP1

**Applications:** ELISA, IHC

**Recommended Dilutions:** IHC: 50-200; ELISA: 5000-10000

**Host Species:** Rabbit

**Clonality:** Rabbit Polyclonal

**Isotype:** Immunogen-specific rabbit IgG

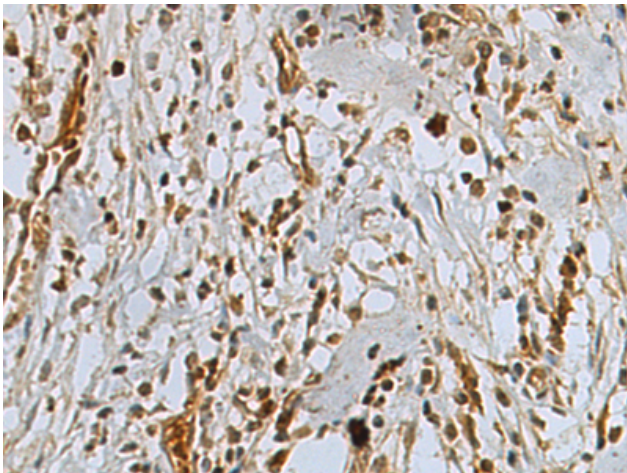
**Purification:** Antigen affinity purification

**Species Reactivity:** Human, Mouse

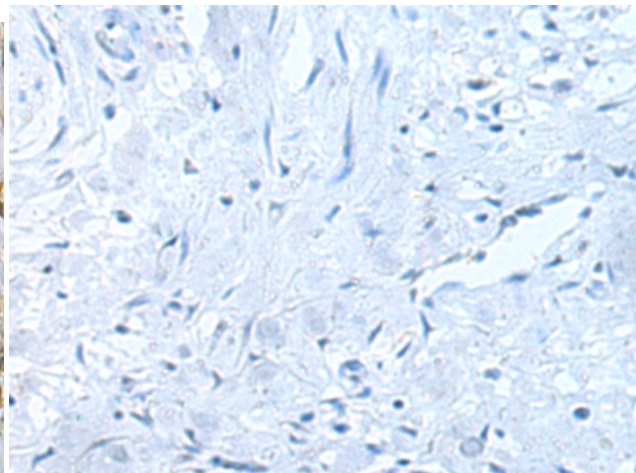
**Constituents:** PBS (without Mg<sup>2+</sup> and Ca<sup>2+</sup>), pH 7.4, 150 mM NaCl, 0.05% Sodium Azide and 40% glycerol

**Research Areas:** Epigenetics and Nuclear Signaling

**Storage & Shipping:** Store at -20°C. Avoid repeated freezing and thawing



Immunohistochemistry analysis of paraffin embedded Human gastric cancer tissue using 218913(PAXIP1 Antibody) at a dilution of 1/80(Nucleus).



In comparison with the IHC on the left, the same paraffin-embedded Human gastric cancer tissue is first treated with the fusion protein and then with 218913(Anti-PAXIP1 Antibody) at dilution 1/80.