

## PBOV1 RABBIT PAB

**Cat.#:** S220784

**Product Name:** Anti-PBOV1 Rabbit Polyclonal Antibody

**Synonyms:** UC28; UROC28; dJ171N11.2

**UNIPROT ID:** Q9GZY1 (Gene Accession - NP\_067648 )

**Background:** UROC28, also known as PBOV1 (prostate and breast cancer overexpressed 1) or UC28, is a 135 amino acid cytoplasmic and nuclear protein that is expressed in colon, prostate, small intestine, testis and spleen, with lower expression in thymus, ovary and peripheral blood leukocytes. UROC28 is up-regulated in prostate, breast and bladder cancer, and is thereby considered a useful target for diagnosis and treatment of these cancers. UROC28 is encoded by a gene located on human chromosome 6, which contains 170 million base pairs and comprises nearly 6% of the human genome. Deletion of a portion of the q arm of chromosome 6 is associated with early onset intestinal cancer, suggesting the presence of a cancer susceptibility locus. Additionally, Porphyria cutanea tarda, Parkinson's disease, Stickler syndrome and a susceptibility to bipolar disorder are all associated with genes that map to chromosome 6.

**Immunogen:** Synthetic peptide of human PBOV1

**Applications:** ELISA, WB, IHC

**Recommended Dilutions:** IHC: Oct-50;WB: 200-1000;ELISA: 5000-10000

**Host Species:** Rabbit

**Clonality:** Rabbit Polyclonal

**Isotype:** Immunogen-specific rabbit IgG

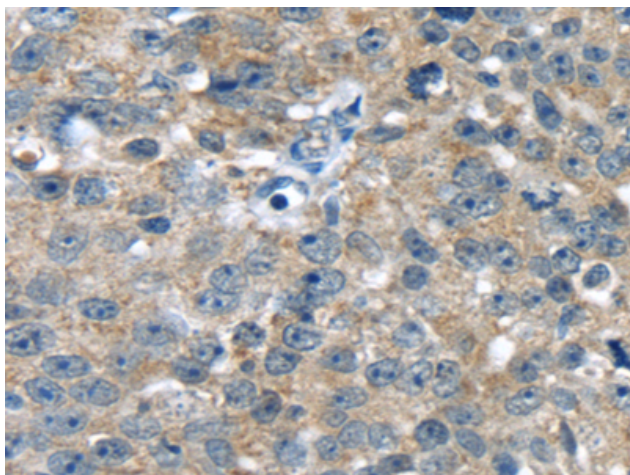
**Purification:** Antigen affinity purification

**Species Reactivity:** Human

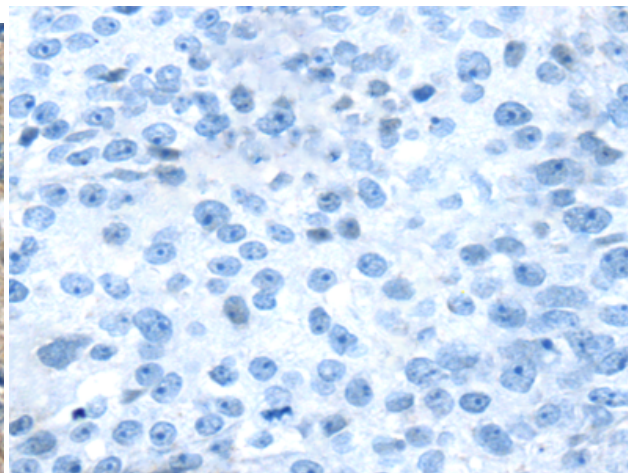
**Constituents:** PBS (without Mg<sup>2+</sup> and Ca<sup>2+</sup>), pH 7.4, 150 mM NaCl, 0.05% Sodium Azide and 40% glycerol

**Research Areas:** Epigenetics and Nuclear Signaling, Cancer

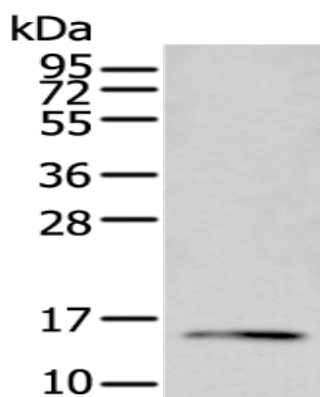
**Storage & Shipping:** Store at -20°C. Avoid repeated freezing and thawing



Immunohistochemistry analysis of paraffin embedded Human breast cancer tissue using 220784(PBOV1 Antibody) at a dilution of 1/20(Cytoplasm).



In comparison with the IHC on the left, the same paraffin-embedded Human breast cancer tissue is first treated with the synthetic peptide and then with 220784(Anti-PBOV1 Antibody) at dilution 1/20.



Gel: 12%SDS-PAGE, Lysate: 40  $\mu$ g;  
Lane: Human fetal intestines tissue lysate;  
Primary antibody: 220784(PBOV1 Antibody) at dilution 1/300;  
Secondary antibody: Goat anti rabbit IgG at 1/8000 dilution;  
Exposure time: 1 minute