

PCID2 RABBIT PAB

Cat.#: S218064

Product Name: Anti-PCID2 Rabbit Polyclonal Antibody

Synonyms: F10

UNIPROT ID: Q5JVF3 (Gene Accession - BC016614)

Background: This gene encodes a component of the TREX-2 complex (transcription and export complex 2), which regulates mRNA export from the nucleus. This protein regulates expression of Mad2 mitotic arrest deficient-like 1, a cell division checkpoint protein. This protein also interacts with and stabilizes Brca2 (breast cancer 2) protein. Alternative splicing results in multiple transcript variants.

Immunogen: Fusion protein of human PCID2

Applications: ELISA, WB, IHC

Recommended Dilutions: IHC: 50-200;WB: 1000-5000;ELISA: 5000-10000

Host Species: Rabbit

Clonality: Rabbit Polyclonal

Isotype: Immunogen-specific rabbit IgG

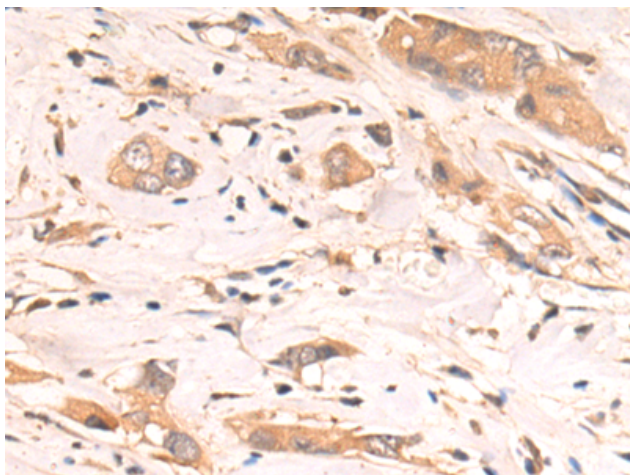
Purification: Antigen affinity purification

Species Reactivity: Human, Mouse

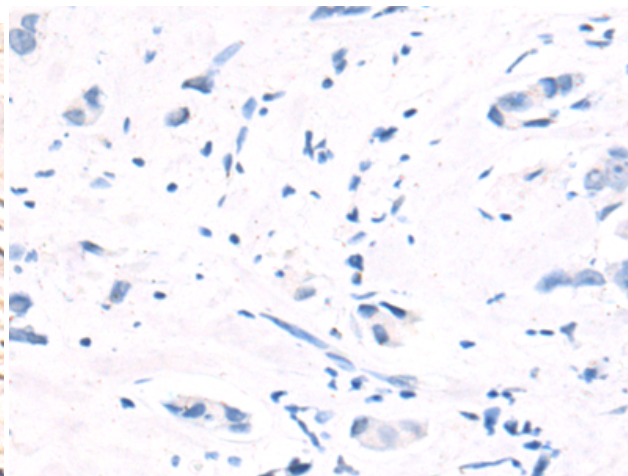
Constituents: PBS (without Mg²⁺ and Ca²⁺), pH 7.4, 150 mM NaCl, 0.05% Sodium Azide and 40% glycerol

Research Areas: Cell Biology

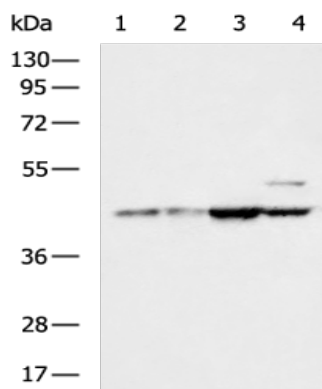
Storage & Shipping: Store at -20°C. Avoid repeated freezing and thawing



Immunohistochemistry analysis of paraffin embedded Human breast cancer tissue using 218064(PCID2 Antibody) at a dilution of 1/80(Cytoplasm).



In comparison with the IHC on the left, the same paraffin-embedded Human breast cancer tissue is first treated with the fusion protein and then with 218064(Anti-PCID2 Antibody) at dilution 1/80.



Gel: 8%SDS-PAGE, Lysate: 40 µg;
 Lane 1-4: HUVEC, CaCO₂, 293T, LOVO cell lysates;
 Primary antibody: 218064(PCID2 Antibody) at dilution 1/1200;
 Secondary antibody: HRP-conjugated Goat anti rabbit IgG at 1/5000 dilution;
 Exposure time: 15 seconds