

## PCK2 RABBIT MAB

**Cat.#:** N262680

**Product Name:** Anti-PCK2 Rabbit Monoclonal Antibody

**Synonyms:** PCK2; PEPCK2; Phosphoenolpyruvate carboxykinase [GTP]; mitochondrial; PEPCK-M; Phosphoenolpyruvate carboxylase

**UNIPROT ID:** Q16822

**Background:** Catalyzes the conversion of oxaloacetate (OAA) to phosphoenolpyruvate (PEP), the rate-limiting step in the metabolic pathway that produces glucose from lactate and other precursors derived from the citric acid cycle.

**Immunogen:** A synthetic peptide of human PCK2

**Applications:** WB,IHC-F,IHC-P,ICC/IF

**Recommended Dilutions:** WB: 1/500-1/1000 IHC: 1/50-1/100 IF: 1/50-1/200

**Host Species:** Rabbit

**Clonality:** Rabbit Monoclonal

**Clone ID:** R07-8K6

**MW:** Calculated MW: 71 kDa; Observed MW: 71 kDa

**Isotype:** IgG

**Purification:** Affinity Purified

**Species Reactivity:** Human,Mouse,Rat

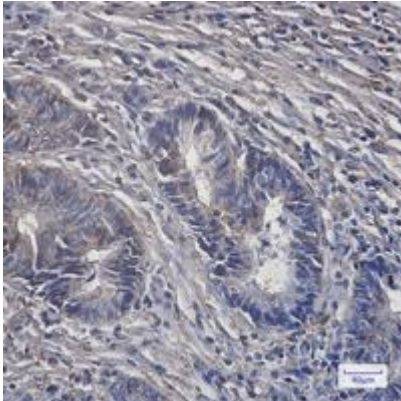
**Conjugation:** Unconjugated

**Modification:** Unmodified

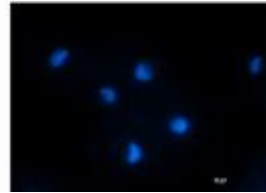
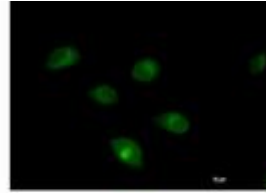
**Constituents:** PBS (without Mg<sup>2+</sup> and Ca<sup>2+</sup>), pH 7.3 containing 50% glycerol, 0.5% BSA and 0.02% sodium azide

**Research Areas:** Cardiovascular

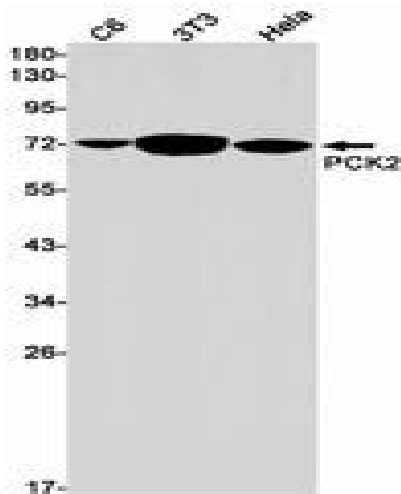
**Storage & Shipping:** Store at -20°C. Avoid repeated freezing and thawing



Immunohistochemistry analysis of paraffin-embedded Human colon cancer tissue using PCK2 antibody. High-pressure and temperature Sodium Citrate pH 6.0 was used for antigen retrieval.



Immunocytochemistry analysis of PCK2 (green) in HT-1080 using PCK2 antibody, and DAPI (blue).



Western blot analysis of PCK2 in C6, 3T3, Hela lysates using PCK2 antibody.