

## PCNA RABBIT PAB

**Cat.#:** S216220

**Product Name:** Anti-PCNA Rabbit Polyclonal Antibody

**Synonyms:** ATLD2

**UNIPROT ID:** P12004 (Gene Accession - BC000491)

**Background:** The protein encoded by this gene is found in the nucleus and is a cofactor of DNA polymerase delta. The encoded protein acts as a homotrimer and helps increase the processivity of leading strand synthesis during DNA replication. In response to DNA damage, this protein is ubiquitinated and is involved in the RAD6-dependent DNA repair pathway. Two transcript variants encoding the same protein have been found for this gene. Pseudogenes of this gene have been described on chromosome 4 and on the X chromosome.

**Immunogen:** Fusion protein of human PCNA

**Applications:** ELISA, WB, IHC

**Recommended Dilutions:** IHC: 25-100;WB: 500-2000;ELISA: 5000-10000

**Host Species:** Rabbit

**Clonality:** Rabbit Polyclonal

**Isotype:** Immunogen-specific rabbit IgG

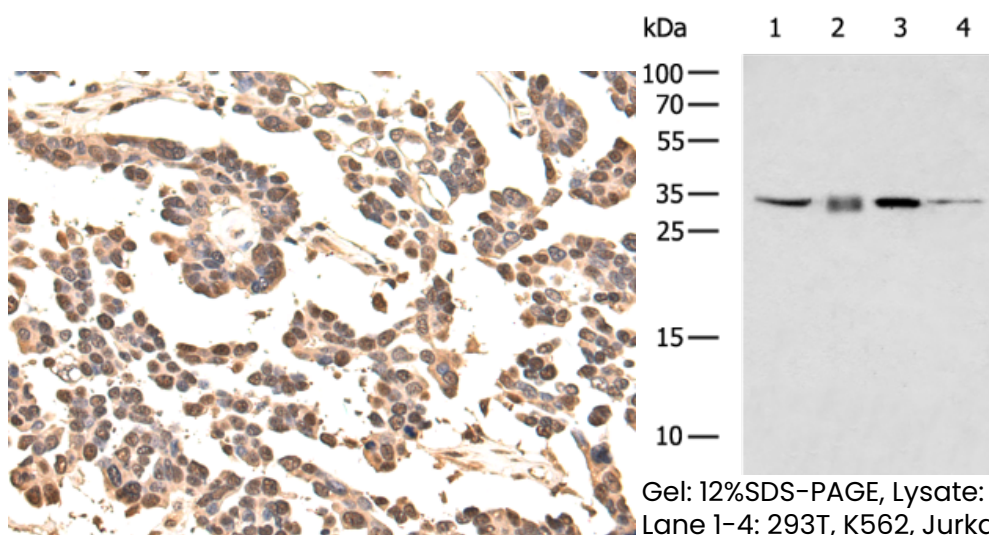
**Purification:** Antigen affinity purification

**Species Reactivity:** Human, Mouse, Rat

**Constituents:** PBS (without Mg<sup>2+</sup> and Ca<sup>2+</sup>), pH 7.4, 150 mM NaCl, 0.05% Sodium Azide and 40% glycerol

**Research Areas:** Epigenetics and Nuclear Signaling, Cancer

**Storage & Shipping:** Store at -20°C. Avoid repeated freezing and thawing



Immunohistochemistry analysis of paraffin-embedded Human colorectal cancer tissue using 216220(PCNA Antibody) at a dilution of 1/35(Nucleus).

Gel: 12%SDS-PAGE, Lysate: 40 µg;  
Lane 1-4: 293T, K562, Jurkat, RAW264.7 cell lysates;  
Primary antibody: 216220(PCNA Antibody) at dilution 1/400;  
Secondary antibody: HRP-conjugated Goat anti rabbit IgG at 1/5000 dilution;  
Exposure time: 3 seconds



# Product Description

Pioneering GTPase and Oncogene Product Development since 2010

---