

PDCD1 RABBIT PAB

Cat.#: S213932

Product Name: Anti-PDCD1 Rabbit Polyclonal Antibody

Synonyms: PD1; PD-1; CD279; SLEB2; hPD-1; hPD-I; hSLE1

UNIPROT ID: Q15116 (Gene Accession - NP_005009)

Background: Programmed cell death protein 1 (PDCD1) is an immune-inhibitory receptor expressed in activated T cells; it is involved in the regulation of T-cell functions, including those of effector CD8+ T cells. In addition, this protein can also promote the differentiation of CD4+ T cells into T regulatory cells. PDCD1 is expressed in many types of tumors including melanomas, and has demonstrated to play a role in anti-tumor immunity. Moreover, this protein has been shown to be involved in safeguarding against autoimmunity, however, it can also contribute to the inhibition of effective anti-tumor and anti-microbial immunity.

Immunogen: Synthetic peptide of human PDCD1

Applications: ELISA, IHC

Recommended Dilutions: IHC: 50-100; ELISA: 2000-10000

Host Species: Rabbit

Clonality: Rabbit Polyclonal

Isotype: Immunogen-specific rabbit IgG

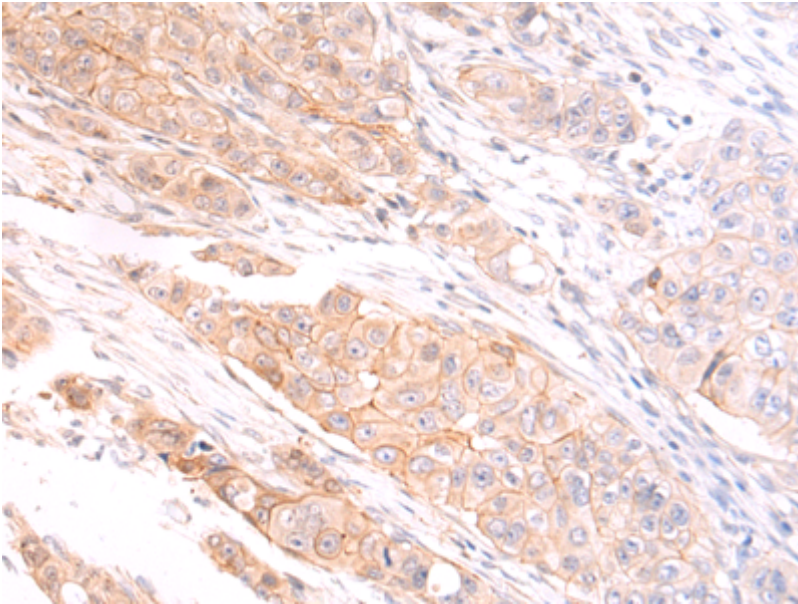
Purification: Antigen affinity purification

Species Reactivity: Human

Constituents: PBS (without Mg²⁺ and Ca²⁺), pH 7.4, 150 mM NaCl, 0.05% Sodium Azide and 40% glycerol

Research Areas: Cell Biology, Immunology, Cancer

Storage & Shipping: Store at -20°C. Avoid repeated freezing and thawing



Immunohistochemistry analysis of paraffin-embedded Human breast cancer tissue using 213932(PDCD1 Antibody) at a dilution of 1/50(Cell membrane).