

PDCL2 RABBIT PAB

Cat.#: S219034

Product Name: Anti-PDCL2 Rabbit Polyclonal Antibody

Synonyms: GCPHLP

UNIPROT ID: Q8N4E4 (Gene Accession - BC034431)

Background: This gene encodes a member of the phosphducin-like protein family and is a putative modulator of heterotrimeric G proteins. The protein shares extensive amino acid sequence homology with phosphducin. Members of the phosphducin-like protein family have been shown to bind to the beta-gamma subunits of G proteins.

Immunogen: Fusion protein of human PDCL2

Applications: ELISA, IHC

Recommended Dilutions: IHC: 50-300; ELISA: 5000-10000

Host Species: Rabbit

Clonality: Rabbit Polyclonal

Isotype: Immunogen-specific rabbit IgG

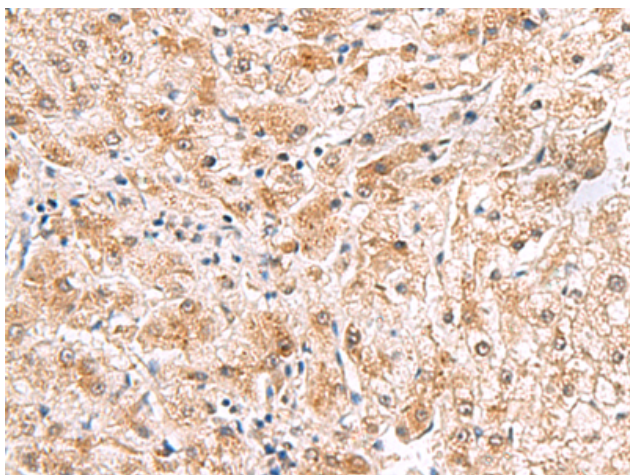
Purification: Antigen affinity purification

Species Reactivity: Human, Mouse

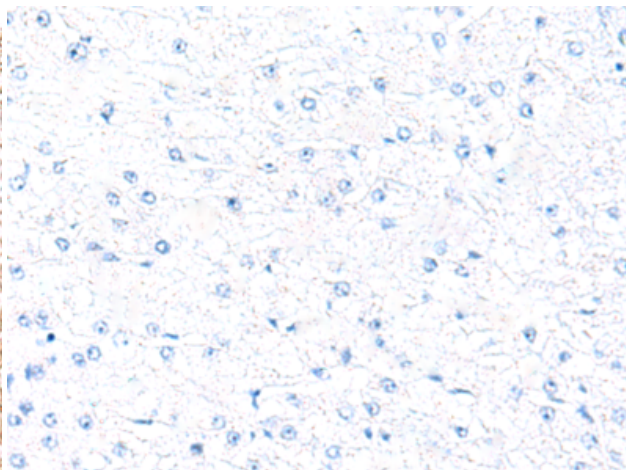
Constituents: PBS (without Mg²⁺ and Ca²⁺), pH 7.4, 150 mM NaCl, 0.05% Sodium Azide and 40% glycerol

Research Areas: Developmental Biology

Storage & Shipping: Store at -20°C. Avoid repeated freezing and thawing



Immunohistochemistry analysis of paraffin embedded Human liver cancer tissue using 219034(PDCL2 Antibody) at a dilution of 1/65(Cytoplasm).



In comparison with the IHC on the left, the same paraffin-embedded Human liver cancer tissue is first treated with the fusion protein and then with 219034(Anti-PDCL2 Antibody) at dilution 1/65.