

PDGFRL RABBIT PAB

Cat.#: S217677

Product Name: Anti-PDGFRL Rabbit Polyclonal Antibody

Synonyms: PDGRL; PRLTS

UNIPROT ID: Q15198 (Gene Accession - BC010927)

Background: This gene encodes a protein with significant sequence similarity to the ligand binding domain of platelet-derived growth factor receptor beta. Mutations in this gene, or deletion of a chromosomal segment containing this gene, are associated with sporadic hepatocellular carcinomas, colorectal cancers, and non-small cell lung cancers. This suggests this gene product may function as a tumor suppressor.

Immunogen: Fusion protein of human PDGFRL

Applications: ELISA, WB, IHC

Recommended Dilutions: IHC: 100-300;WB: 500-2000;ELISA: 5000-10000

Host Species: Rabbit

Clonality: Rabbit Polyclonal

Isotype: Immunogen-specific rabbit IgG

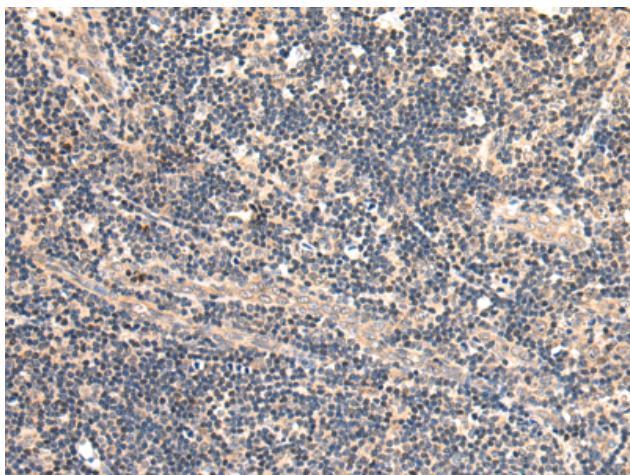
Purification: Antigen affinity purification

Species Reactivity: Human, Mouse, Rat

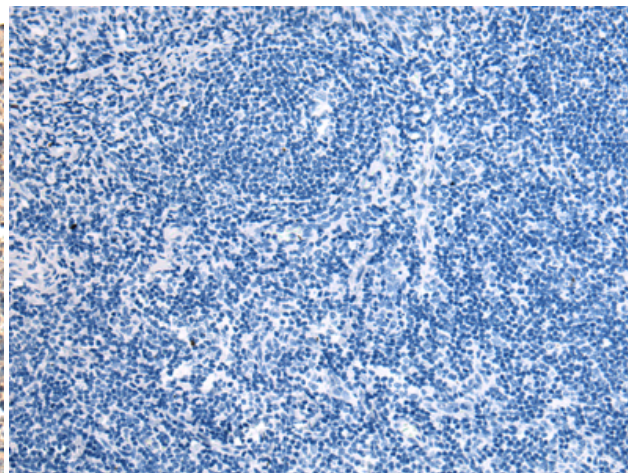
Constituents: PBS (without Mg²⁺ and Ca²⁺), pH 7.4, 150 mM NaCl, 0.05% Sodium Azide and 40% glycerol

Research Areas: Cancer

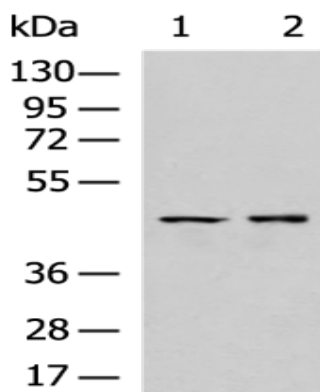
Storage & Shipping: Store at -20°C. Avoid repeated freezing and thawing



Immunohistochemistry analysis of paraffin embedded Human tonsil tissue using 217677(PDGFRL Antibody) at a dilution of 1/140(Secreted).



In comparison with the IHC on the left, the same paraffin-embedded Human tonsil tissue is first treated with the fusion protein and then with 217677(Anti-PDGFRL Antibody) at dilution 1/140.



Gel: 8%SDS-PAGE, Lysate: 40 μ g;
 Lane 1-2: HUVEC, HT29 cell lysates;
 Primary antibody: 217677(PDGFRL Antibody) at dilution 1/800;
 Secondary antibody: HRP-conjugated Goat anti rabbit IgG at 1/5000 dilution;
 Exposure time: 1 minute