

## PDHB RABBIT PAB

**Cat.#:** S217678

**Product Name:** Anti-PDHB Rabbit Polyclonal Antibody

**Synonyms:** PDHBD; PHE1B; PDHE1B; PDHE1-B

**UNIPROT ID:** P11177 (Gene Accession - BC000439 )

**Background:** The pyruvate dehydrogenase (PDH) complex is a nuclear-encoded mitochondrial multienzyme complex that catalyzes the overall conversion of pyruvate to acetyl-CoA and carbon dioxide, and provides the primary link between glycolysis and the tricarboxylic acid (TCA) cycle. The PDH complex is composed of multiple copies of three enzymatic components: pyruvate dehydrogenase (E1), dihydrolipoamide acetyltransferase (E2) and lipoamide dehydrogenase (E3). The E1 enzyme is a heterotetramer of two alpha and two beta subunits. This gene encodes the E1 beta subunit. Mutations in this gene are associated with pyruvate dehydrogenase E1-beta deficiency. Alternatively spliced transcript variants have been found for this gene. [provided by RefSeq, Mar 2012]

**Immunogen:** Fusion protein of human PDHB

**Applications:** ELISA, WB, IHC

**Recommended Dilutions:** IHC: 100-300;WB: 1000-5000;ELISA: 5000-10000

**Host Species:** Rabbit

**Clonality:** Rabbit Polyclonal

**Isotype:** Immunogen-specific rabbit IgG

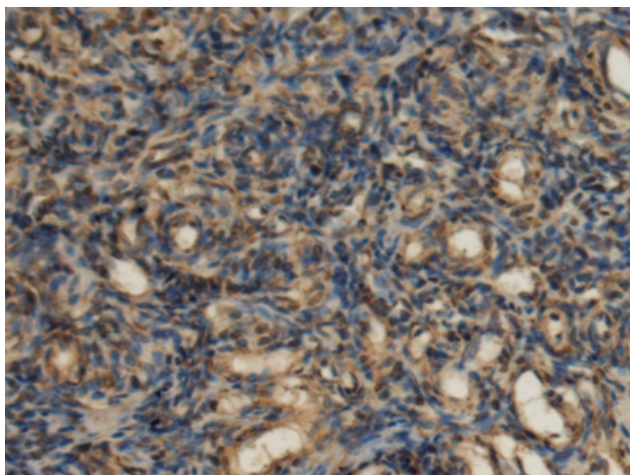
**Purification:** Antigen affinity purification

**Species Reactivity:** Human, Mouse, Rat

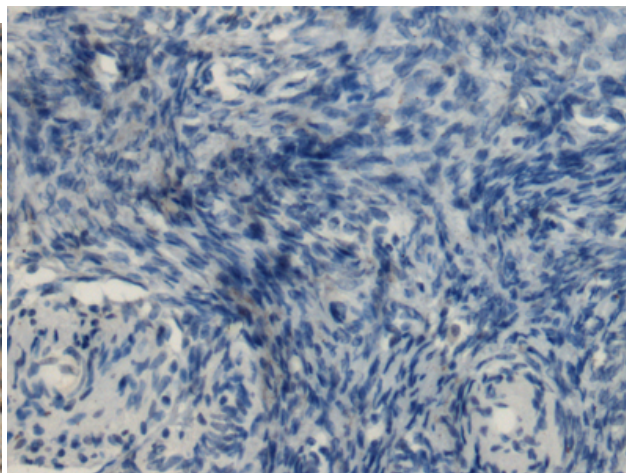
**Constituents:** PBS (without Mg<sup>2+</sup> and Ca<sup>2+</sup>), pH 7.4, 150 mM NaCl, 0.05% Sodium Azide and 40% glycerol

**Research Areas:** Metabolism, Cancer

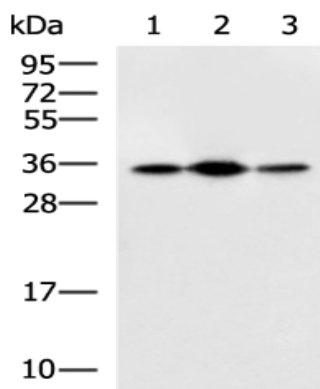
**Storage & Shipping:** Store at -20°C. Avoid repeated freezing and thawing



Immunohistochemistry analysis of paraffin embedded Human ovarian cancer tissue using 217678(PDHB Antibody) at a dilution of 1/120(Cytoplasm).



In comparison with the IHC on the left, the same paraffin-embedded Human ovarian cancer tissue is first treated with the fusion protein and then with 217678(Anti-PDHB Antibody) at dilution 1/120.



Gel: 12%SDS-PAGE, Lysate: 40 µg;  
 Lane 1-3: Rat heart tissue, Human heart tissue,  
 HepG2 cell lysates;  
 Primary antibody: 217678(PDHB Antibody) at  
 dilution 1/400;  
 Secondary antibody: HRP-conjugated Goat  
 anti rabbit IgG at 1/5000 dilution;  
 Exposure time: 10 seconds