

## PDLIM1 RABBIT MAB

**Cat.#:** N262689

**Product Name:** Anti-PDLIM1 Rabbit Monoclonal Antibody

**Synonyms:** PDLIM1; CLIM1; CLP36; PDZ and LIM domain protein 1; C-terminal LIM domain protein 1; Elfin; LIM domain protein CLP-36

**UNIPROT ID:** O00151

**Background:** Cytoskeletal protein that may act as an adapter that brings other proteins (like kinases) to the cytoskeleton.

**Immunogen:** A synthetic peptide of human PDLIM1

**Applications:** WB, ICC/IF, IP

**Recommended Dilutions:** WB: 1/500-1/1000 IF: 1/50-1/200 IP: 1/20

**Host Species:** Rabbit

**Clonality:** Rabbit Monoclonal

**Clone ID:** R01-7A8

**MW:** Calculated MW: 36 kDa; Observed MW: 36 kDa

**Isotype:** IgG

**Purification:** Affinity Purified

**Species Reactivity:** Human, Mouse, Rat

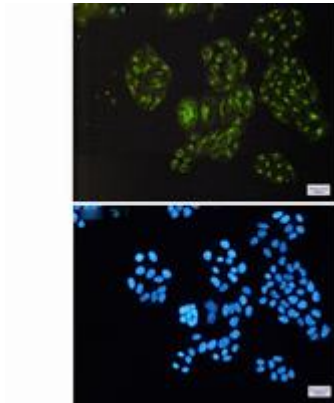
**Conjugation:** Unconjugated

**Modification:** Unmodified

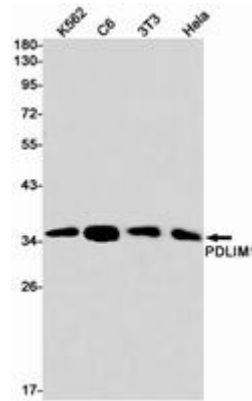
**Constituents:** PBS (without Mg<sup>2+</sup> and Ca<sup>2+</sup>), pH 7.3 containing 50% glycerol, 0.5% BSA and 0.02% sodium azide

**Research Areas:** Epigenetics and Nuclear Signaling

**Storage & Shipping:** Store at -20°C. Avoid repeated freezing and thawing



Immunocytochemistry analysis of PDLIM1 (green) in HeLa using PDLIM1 antibody, and DAPI (blue)



Western blot analysis of PDLIM1 in K562, C6, 3T3, HeLa lysates using PDLIM1 antibody.