

PDLIM2 RABBIT PAB

Cat.#: S217679

Product Name: Anti-PDLIM2 Rabbit Polyclonal Antibody

Synonyms: SLIM; MYSTIQUE

UNIPROT ID: Q96JY6 (Gene Accession - BC021556)

Background: This gene encodes a member of the ALP subfamily of PDZ-LIM domain proteins. The encoded protein suppresses anchorage-dependent growth and promotes cell migration and adhesion through interactions with the actin cytoskeleton via the PDZ domain. The encoded protein is also a putative tumor suppressor protein, and decreased expression of this gene is associated with several malignancies including breast cancer and adult T-cell leukemia. Alternatively spliced transcript variants encoding multiple isoforms have been observed for this gene.

Immunogen: Fusion protein of human PDLIM2

Applications: ELISA, IHC

Recommended Dilutions: IHC: 50-200; ELISA: 5000-10000

Host Species: Rabbit

Clonality: Rabbit Polyclonal

Isotype: Immunogen-specific rabbit IgG

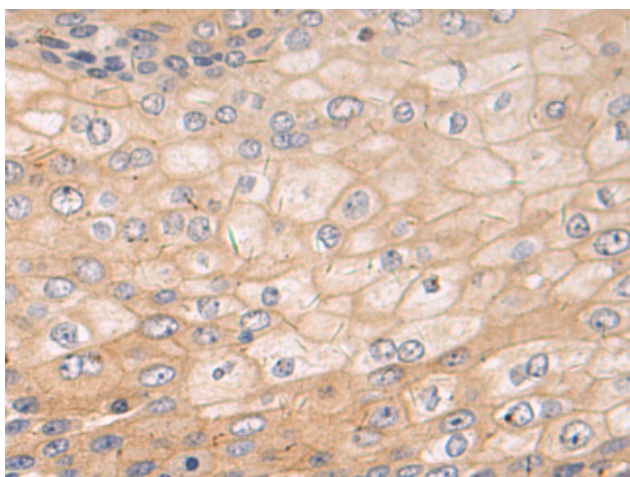
Purification: Antigen affinity purification

Species Reactivity: Human

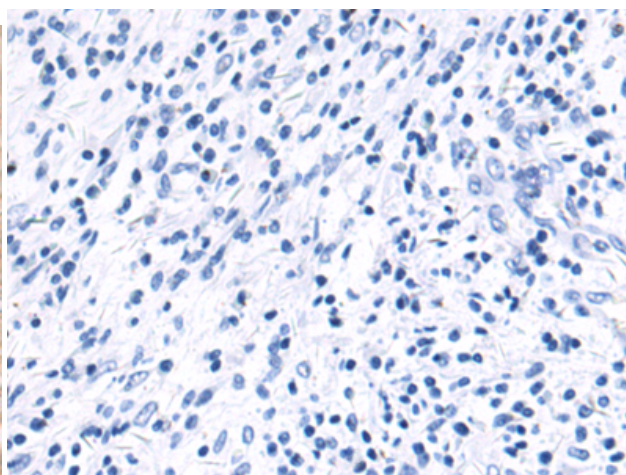
Constituents: PBS (without Mg²⁺ and Ca²⁺), pH 7.4, 150 mM NaCl, 0.05% Sodium Azide and 40% glycerol

Research Areas: Signal Transduction, Cell Biology

Storage & Shipping: Store at -20°C. Avoid repeated freezing and thawing



Immunohistochemistry analysis of paraffin embedded Human esophagus cancer tissue using 217679(PDLIM2 Antibody) at a dilution of 1/60(Cytoplasm).



In comparison with the IHC on the left, the same paraffin-embedded Human esophagus cancer tissue is first treated with the fusion protein and then with 217679(Anti-PDLIM2 Antibody) at dilution 1/60.