

PDPN RABBIT PAB

Cat.#: S221135

Product Name: Anti-PDPN Rabbit Polyclonal Antibody

Synonyms: T1A; GP36; GP40; Gp38; OTS8; T1A2; T1IA; T1A-2; AGGRUS; HTIA-1; PA2.26

UNIPROT ID: Q86YL7 (Gene Accession - NP_006465)

Background: This gene encodes a type-I integral membrane glycoprotein with diverse distribution in human tissues. The physiological function of this protein may be related to its mucin-type character. The homologous protein in other species has been described as a differentiation antigen and influenza-virus receptor. The specific function of this protein has not been determined but it has been proposed as a marker of lung injury. Alternatively spliced transcript variants encoding different isoforms have been identified.

Immunogen: Synthetic peptide of human PDPN

Applications: ELISA, WB, IHC

Recommended Dilutions: IHC: Oct-50;WB: 200-1000;ELISA: 1000-2000

Host Species: Rabbit

Clonality: Rabbit Polyclonal

Isotype: Immunogen-specific rabbit IgG

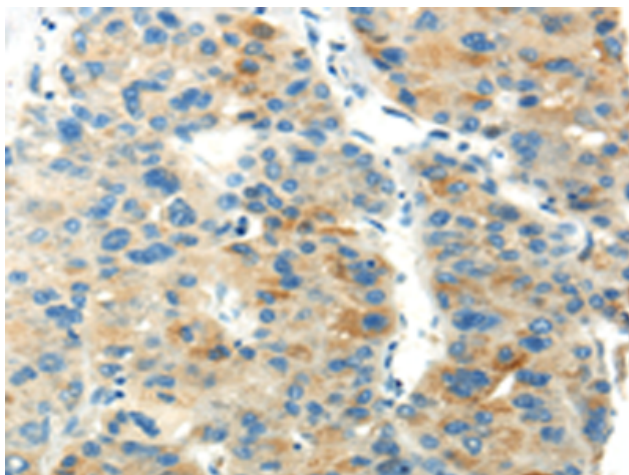
Purification: Antigen affinity purification

Species Reactivity: Human

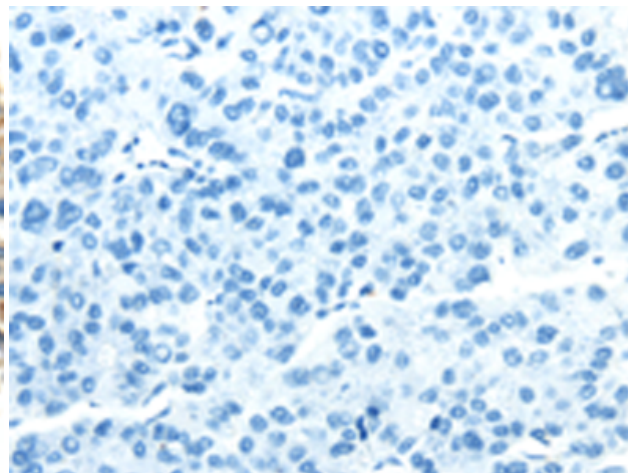
Constituents: PBS (without Mg²⁺ and Ca²⁺), pH 7.4, 150 mM NaCl, 0.05% Sodium Azide and 40% glycerol

Research Areas: Cardiovascular

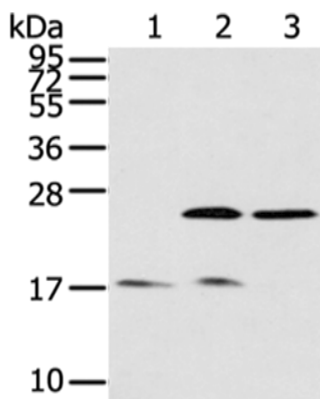
Storage & Shipping: Store at -20°C. Avoid repeated freezing and thawing



Immunohistochemistry analysis of paraffin embedded Human liver cancer tissue using 221135(PDPN Antibody) at a dilution of 1/20(Cell membrane).



In comparison with the IHC on the left, the same paraffin-embedded Human liver cancer tissue is first treated with the synthetic peptide and then with 221135(Anti-PDPN Antibody) at dilution 1/20.



Gel: 12%SDS-PAGE, Lysate: 40 µg;
 Lane 1-3: Human fetal brain tissue, Hela cells, 293T cells;
 Primary antibody: 221135(PDPN Antibody) at dilution 1/200;
 Secondary antibody: Goat anti rabbit IgG at 1/8000 dilution;
 Exposure time: 5 minutes