

PECAM1 RABBIT PAB

Cat.#: S219966

Product Name: Anti-PECAM1 Rabbit Polyclonal Antibody

Synonyms: CD31; PECA1; GPIIA¹; PECAM-1; endoCAM; CD31/EndoCAM

UNIPROT ID: P16284 (Gene Accession - NP_000433)

Background: The protein encoded by this gene is found on the surface of platelets, monocytes, neutrophils, and some types of T-cells, and makes up a large portion of endothelial cell intercellular junctions. The encoded protein is a member of the immunoglobulin superfamily and is likely involved in leukocyte migration, angiogenesis, and integrin activation.

Immunogen: Synthetic peptide of human PECAM1

Applications: ELISA, WB, IHC

Recommended Dilutions: IHC: 50-200;WB: 500-2000;ELISA: 5000-10000

Host Species: Rabbit

Clonality: Rabbit Polyclonal

Isotype: Immunogen-specific rabbit IgG

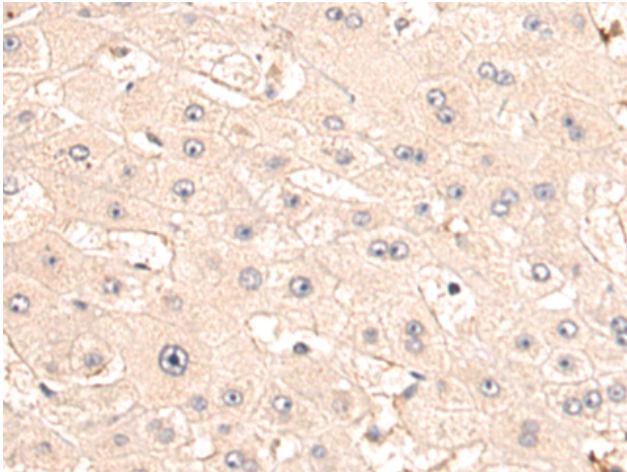
Purification: Antigen affinity purification

Species Reactivity: Human, Mouse

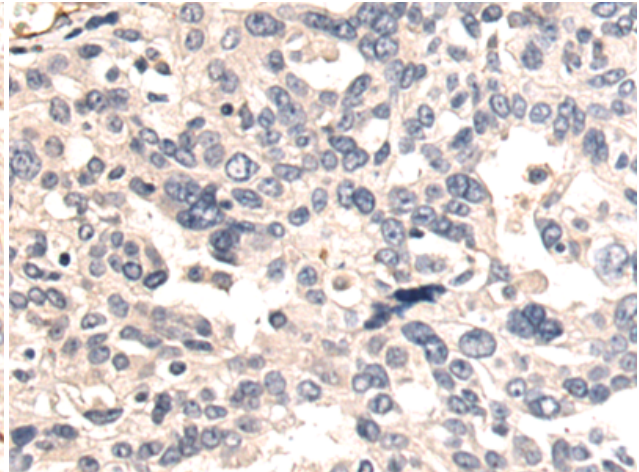
Constituents: PBS (without Mg²⁺ and Ca²⁺), pH 7.4, 150 mM NaCl, 0.05% Sodium Azide and 40% glycerol

Research Areas: Signal Transduction, Cancer, Cardiovascular, Stem Cells

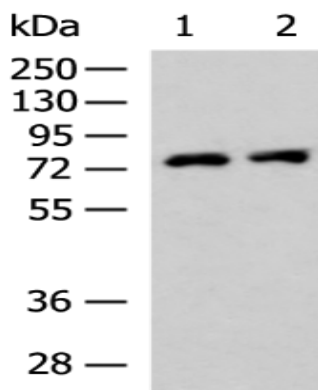
Storage & Shipping: Store at -20°C. Avoid repeated freezing and thawing



Immunohistochemistry analysis of paraffin-embedded Human liver cancer tissue using 219966(PECAM1 Antibody) at a dilution of 1/50(Cytoplasm).



Immunohistochemistry analysis of paraffin-embedded Human breast cancer tissue using 219966(Anti-PECAM1 Antibody) at a dilution of 1/50.



Gel: 8%SDS-PAGE, Lysate: 40 μ g;
 Lane 1-2: K562 and HepG2 cell lysates;
 Primary antibody: 219966(PECAM1 Antibody)
 at dilution 1/500;
 Secondary antibody: HRP-conjugated Goat
 anti rabbit IgG at 1/5000 dilution;
 Exposure time: 40 seconds