

PEF1 RABBIT PAB

Cat.#: S217683

Product Name: Anti-PEF1 Rabbit Polyclonal Antibody

Synonyms: ABP32; PEF1A

UNIPROT ID: Q9UBV8 (Gene Accession - BC012561)

Background: This gene encodes a calcium-binding protein belonging to the penta-EF-hand protein family. The encoded protein has been shown to form a heterodimer with the programmed cell death 6 gene product and may modulate its function in Ca(2+) signaling. Alternative splicing results in multiple transcript variants and a pseudogene has been identified on chromosome 1.

Immunogen: Fusion protein of human PEF1

Applications: ELISA, WB, IHC

Recommended Dilutions: IHC: 25-100;WB: 500-2000;ELISA: 2000-5000

Host Species: Rabbit

Clonality: Rabbit Polyclonal

Isotype: Immunogen-specific rabbit IgG

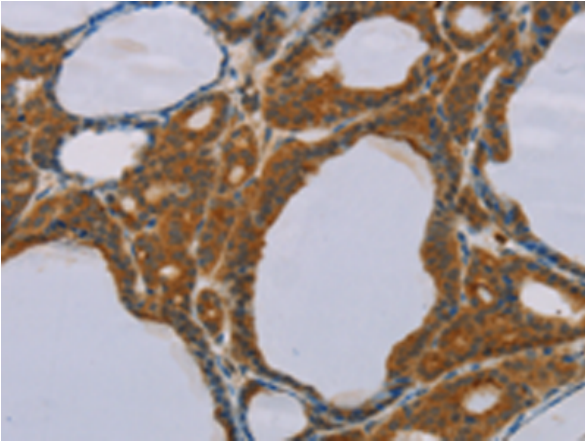
Purification: Antigen affinity purification

Species Reactivity: Human, Mouse, Rat

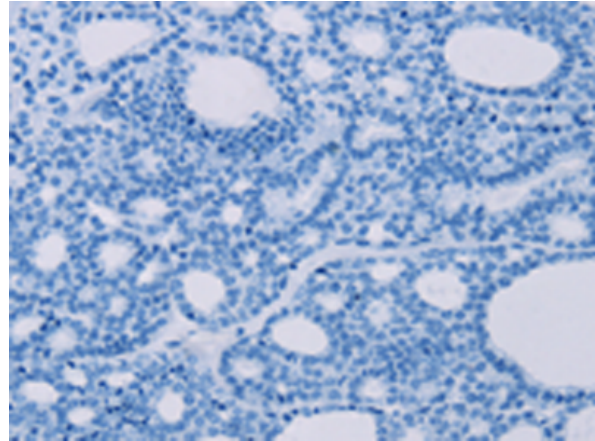
Constituents: PBS (without Mg²⁺ and Ca²⁺), pH 7.4, 150 mM NaCl, 0.05% Sodium Azide and 40% glycerol

Research Areas: Signal Transduction, Cancer

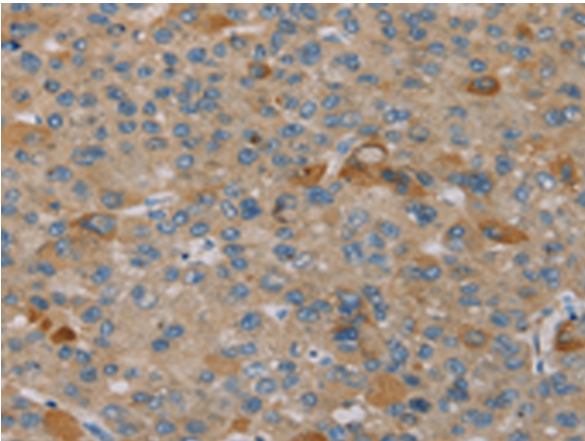
Storage & Shipping: Store at -20°C. Avoid repeated freezing and thawing



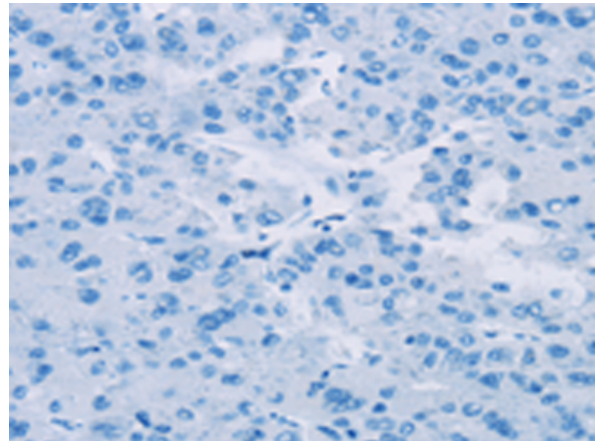
Immunohistochemistry analysis of paraffin embedded Human thyroid cancer tissue using 217683(PEF1 Antibody) at a dilution of 1/20(Cytoplasm).



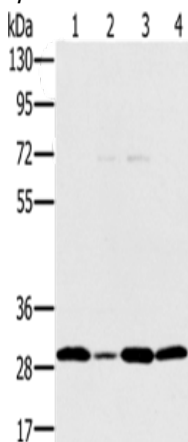
In comparison with the IHC on the left, the same paraffin-embedded Human thyroid cancer tissue is first treated with the fusion protein and then with 217683(Anti-PEF1 Antibody) at dilution 1/20.



The image on the left is immunohistochemistry of paraffin-embedded Human liver cancer tissue using 217683(Anti-PEF1 Antibody) at a dilution of 1/20.



In comparison with the IHC on the left, the same paraffin-embedded Human liver cancer tissue is first treated with fusion protein and then with D222859(Anti-PEF1 Antibody) at dilution 1/20.



Gel: 8%SDS-PAGE, Lysate: 40 µg;
Lane 1-4: Jurkat cells, hela cells, 293T cells, human thyroid cancer tissue;
Primary antibody: 217683(PEF1 Antibody) at dilution 1/200;
Secondary antibody: Goat anti rabbit IgG at 1/8000 dilution;
Exposure time: 20 seconds



Product Description

Pioneering GTPase and Oncogene Product Development since 2010
