

PELP1 RABBIT MAB

Cat.#: N263484

Product Name: Anti-PELP1 Rabbit Monoclonal Antibody

Synonyms: HMX3; MNAR; P160; PELP1; PELP1 proline glutamic acid leucine rich protein 1; PELP1 proline- glutamic

UNIPROT ID: Q8IZL8

Background: This gene encodes a transcription factor which coactivates transcription of estrogen receptor responsive genes and corepresses genes activated by other hormone receptors or sequence-specific transcription factors. Expression of this gene is regulated by both members of the estrogen receptor family. This gene may be involved in the progression of several types of cancer. Alternative splicing results in multiple transcript variants.

Immunogen: A synthetic peptide of human PELP1

Applications: WB,IHC-F,IHC-P,ICC/IF

Recommended Dilutions: WB: 1/500-1/1000 IHC: 1/50-1/100 IF: 1/50-1/200

Host Species: Rabbit

Clonality: Rabbit Monoclonal

Clone ID: R06-4A4

MW: Calculated MW: 120 kDa; Observed MW: 160 kDa

Isotype: IgG

Purification: Affinity Purified

Species Reactivity: Human

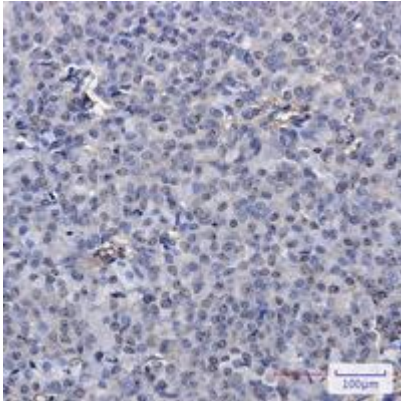
Conjugation: Unconjugated

Modification: Unmodified

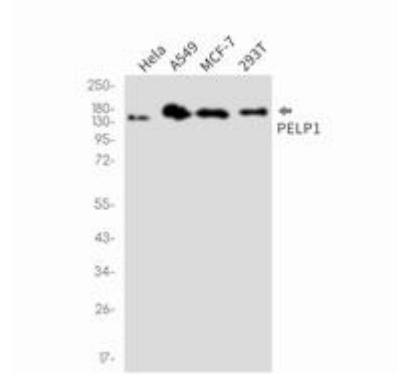
Constituents: PBS (without Mg²⁺ and Ca²⁺), pH 7.3 containing 50% glycerol, 0.5% BSA and 0.02% sodium azide

Research Areas: Signal Transduction

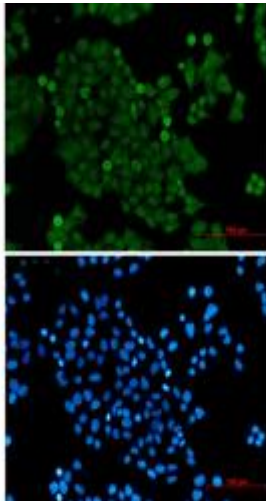
Storage & Shipping: Store at -20°C. Avoid repeated freezing and thawing



Immunohistochemistry analysis of paraffin-embedded Human breast cancer using PELP1 antibody. High-pressure and temperature Sodium Citrate pH 6.0 was used for antigen retrieval.



Western blot analysis of PELP1 in HeLa, A549, MCF-7, 293T lysates using PELP1 antibody.



Immunocytochemistry analysis of PELP1 (green) in HeLa using PELP1 antibody, and DAPI (blue)