

## PELP1 RABBIT MAB

**Cat.#:** N263483

**Product Name:** Anti-PELP1 Rabbit Monoclonal Antibody

**Synonyms:** HMX3; MNAR; P160; PELP1; PELP1 proline glutamic acid leucine rich protein 1; PELP1 proline- glutamic

**UNIPROT ID:** Q8IZL8

**Background:** This gene encodes a transcription factor which coactivates transcription of estrogen receptor responsive genes and corepresses genes activated by other hormone receptors or sequence-specific transcription factors. Expression of this gene is regulated by both members of the estrogen receptor family. This gene may be involved in the progression of several types of cancer. Alternative splicing results in multiple transcript variants.

**Immunogen:** A synthetic peptide of human PELP1

**Applications:** WB,IHC-F,IHC-P,ICC/IF

**Recommended Dilutions:** WB: 1/500-1/1000 IHC: 1/50-1/100 IF: 1/50-1/200

**Host Species:** Rabbit

**Clonality:** Rabbit Monoclonal

**Clone ID:** R03-8F7

**MW:** Calculated MW: 120 kDa; Observed MW: 160 kDa

**Isotype:** IgG

**Purification:** Affinity Purified

**Species Reactivity:** Human

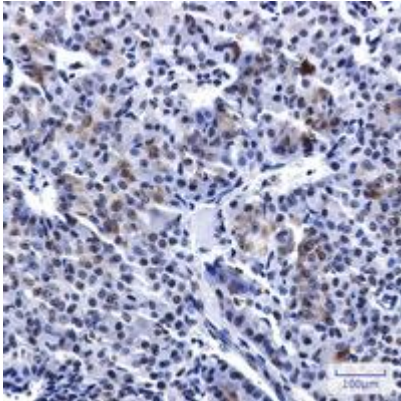
**Conjugation:** Unconjugated

**Modification:** Unmodified

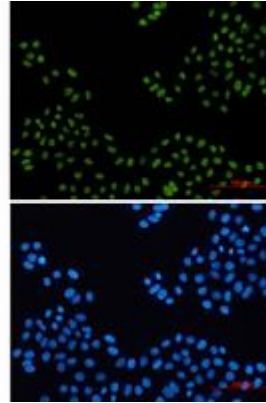
**Constituents:** PBS (without Mg<sup>2+</sup> and Ca<sup>2+</sup>), pH 7.3 containing 50% glycerol, 0.5% BSA and 0.02% sodium azide

**Research Areas:** Signal Transduction

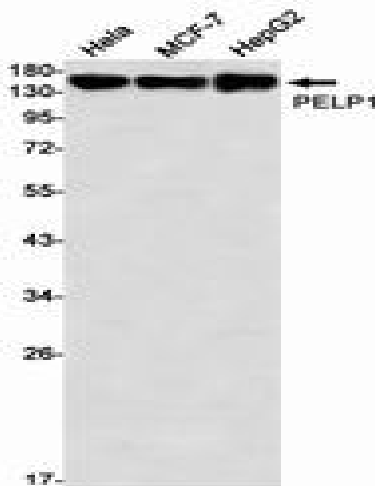
**Storage & Shipping:** Store at -20°C. Avoid repeated freezing and thawing



Immunohistochemistry analysis of paraffin-embedded Human breast cancer tissue using PELP1 antibody. High-pressure and temperature Sodium Citrate pH 6.0 was used for antigen retrieval.



Immunocytochemistry analysis of PELP1 (green) in Hela using PELP1 antibody, and DAPI (blue).



Western blot analysis of PELP1 in Hela, MCF-7, HepG2 lysates using PELP1 antibody.