

## PEX14 RABBIT PAB

**Cat.#:** S222373

**Product Name:** Anti-PEX14 Rabbit Polyclonal Antibody

**Synonyms:** NAPP2; PBD13A; Pex14p; dJ734G22.2

**UNIPROT ID:** O75381 (Gene Accession - NP\_004556 )

**Background:** This gene encodes an essential component of the peroxisomal import machinery. The protein is integrated into peroxisome membranes with its C-terminus exposed to the cytosol, and interacts with the cytosolic receptor for proteins containing a PTS1 peroxisomal targeting signal. The protein also functions as a transcriptional corepressor and interacts with a histone deacetylase. A mutation in this gene results in one form of Zellweger syndrome.

**Immunogen:** Synthetic peptide of human PEX14

**Applications:** ELISA, WB, IHC

**Recommended Dilutions:** IHC: 50–200;WB: 500–2000;ELISA: 5000–10000

**Host Species:** Rabbit

**Clonality:** Rabbit Polyclonal

**Isotype:** Immunogen-specific rabbit IgG

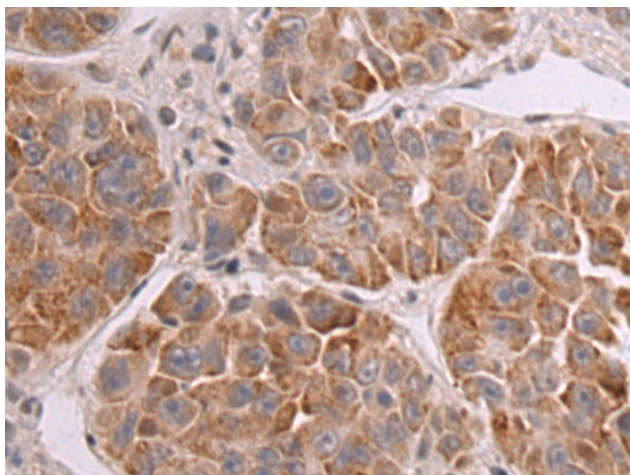
**Purification:** Antigen affinity purification

**Species Reactivity:** Human, Mouse, Rat

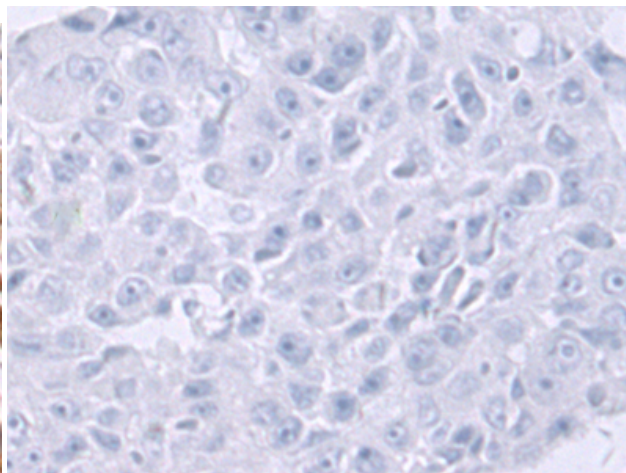
**Constituents:** PBS (without Mg<sup>2+</sup> and Ca<sup>2+</sup>), pH 7.4, 150 mM NaCl, 0.05% Sodium Azide and 40% glycerol

**Research Areas:** Tags & Cell Markers, Signal Transduction, Epigenetics and Nuclear Signaling

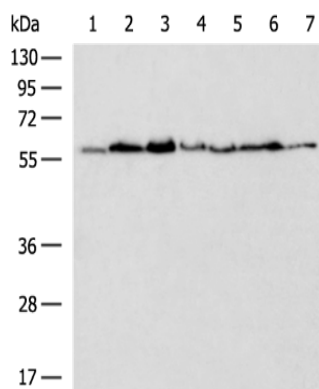
**Storage & Shipping:** Store at -20°C. Avoid repeated freezing and thawing



Immunohistochemistry analysis of paraffin embedded Human liver cancer tissue using 222373(PEX14 Antibody) at a dilution of 1/50(Cytoplasm).



In comparison with the IHC on the left, the same paraffin-embedded Human liver cancer tissue is first treated with the synthetic peptide and then with 222373(Anti-PEX14 Antibody) at dilution 1/50.



Gel: 8%SDS-PAGE, Lysate: 40 µg;  
 Lane 1-7: SKOV3, C2C12, RAW264.7, NIH/3T3,  
 Hela, A431, 293T cell lysates;  
 Primary antibody: 222373(PEX14 Antibody) at  
 dilution 1/400;  
 Secondary antibody: HRP-conjugated Goat  
 anti rabbit IgG at 1/5000 dilution;  
 Exposure time: 15 seconds