

PFN4 RABBIT PAB

Cat.#: S216739

Product Name: Anti-PFN4 Rabbit Polyclonal Antibody

Synonyms:

UNIPROT ID: Q8NHR9 (Gene Accession - BC029523)

Background: This gene belongs to the profilin family. It binds to actin and affects the structure of the cytoskeleton. Mostly expression in testes, pituitary gland, midbrain, bone marrow, vulva.

Immunogen: Fusion protein of human PFN4

Applications: ELISA, IHC

Recommended Dilutions: IHC: 25-100; ELISA: 1000-5000

Host Species: Rabbit

Clonality: Rabbit Polyclonal

Isotype: Immunogen-specific rabbit IgG

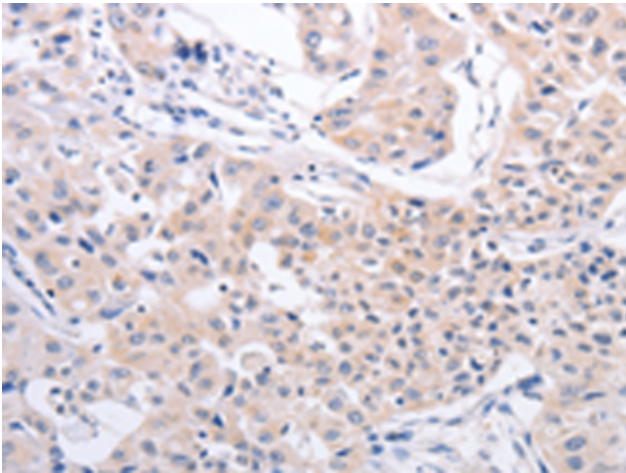
Purification: Antigen affinity purification

Species Reactivity: Human, Mouse, Rat

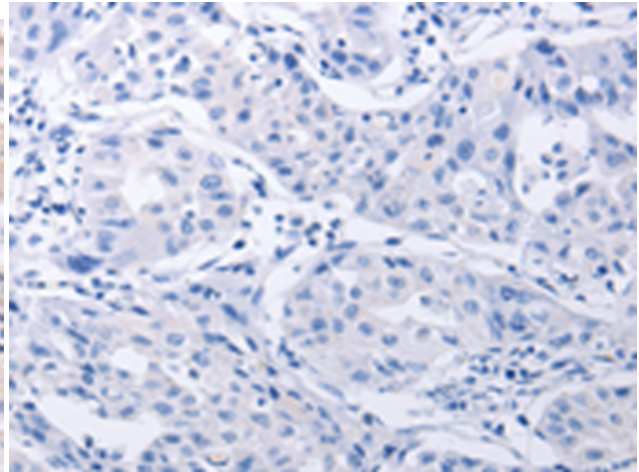
Constituents: PBS (without Mg²⁺ and Ca²⁺), pH 7.4, 150 mM NaCl, 0.05% Sodium Azide and 40% glycerol

Research Areas: Signal Transduction

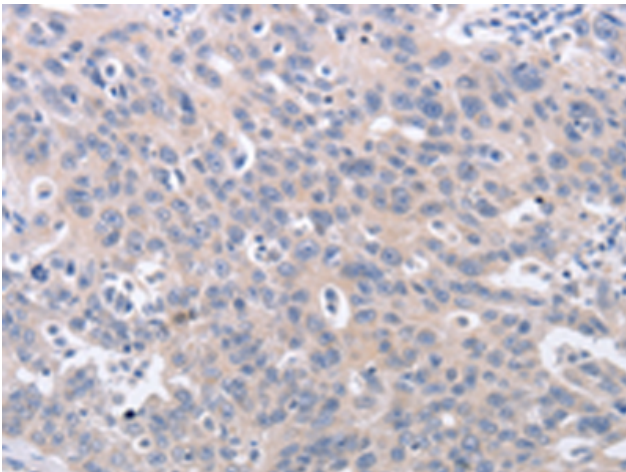
Storage & Shipping: Store at -20°C. Avoid repeated freezing and thawing



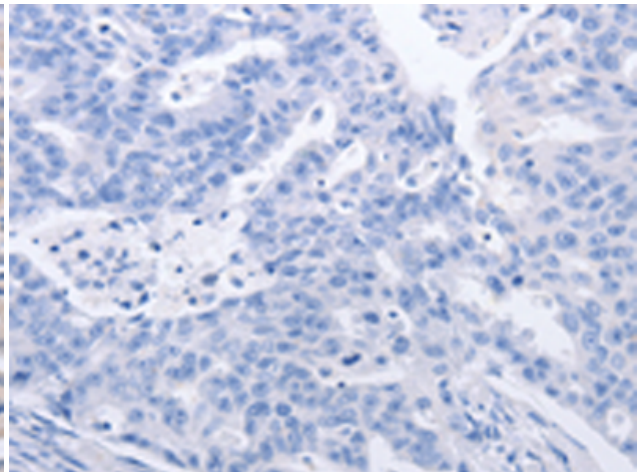
Immunohistochemistry analysis of paraffin embedded Human lung cancer tissue using 216739 (PFN4 Antibody) at a dilution of 1/20 (Cytoplasm).



In comparison with the IHC on the left, the same paraffin-embedded Human lung cancer tissue is first treated with the fusion protein and then with 216739 (Anti-PFN4 Antibody) at dilution 1/20.



The image on the left is immunohistochemistry of paraffin-embedded Human ovarian cancer tissue using 216739 (Anti-PFN4 Antibody) at a dilution of 1/20.



In comparison with the IHC on the left, the same paraffin-embedded Human ovarian cancer tissue is first treated with fusion protein and then with D221147 (Anti-PFN4 Antibody) at dilution 1/20.