

PGF RABBIT PAB

Cat.#: S216736

Product Name: Anti-PGF Rabbit Polyclonal Antibody

Synonyms: PGFL; PIGF; PLGF; PIGF-2; D12S1900; SHGC-10760

UNIPROT ID: P49763 (Gene Accession - BC001422)

Background: This gene encodes a growth factor found in placenta which is homologous to vascular endothelial growth factor. Alternatively spliced transcripts encoding different isoforms have been found for this gene.

Immunogen: Fusion protein of human PGF

Applications: ELISA, WB, IHC

Recommended Dilutions: IHC: 50-100;WB: 500-2000;ELISA: 5000-10000

Host Species: Rabbit

Clonality: Rabbit Polyclonal

Isotype: Immunogen-specific rabbit IgG

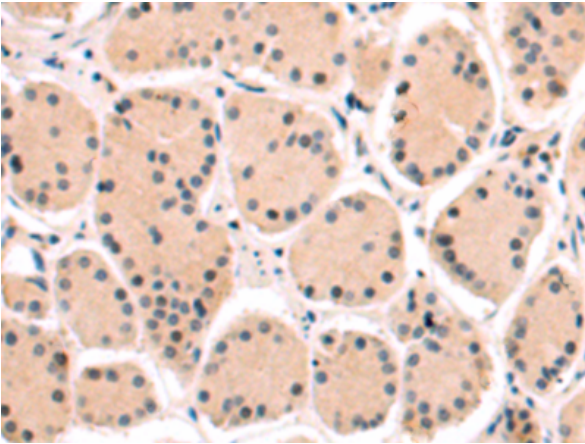
Purification: Antigen affinity purification

Species Reactivity: Human

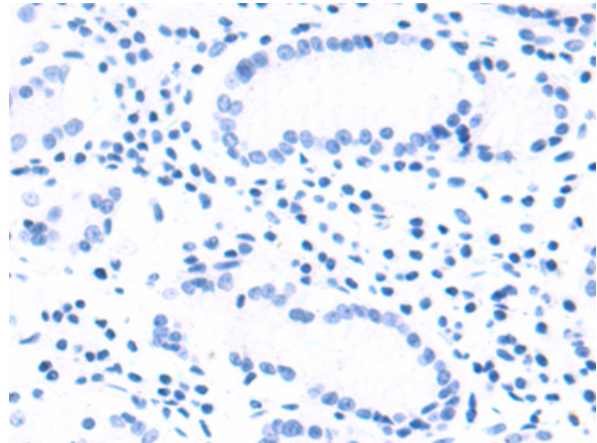
Constituents: PBS (without Mg²⁺ and Ca²⁺), pH 7.4, 150 mM NaCl, 0.05% Sodium Azide and 40% glycerol

Research Areas: Cardiovascular, Cancer, Metabolism

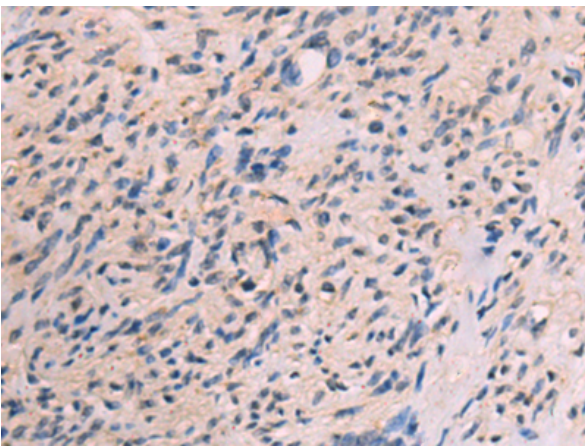
Storage & Shipping: Store at -20°C. Avoid repeated freezing and thawing



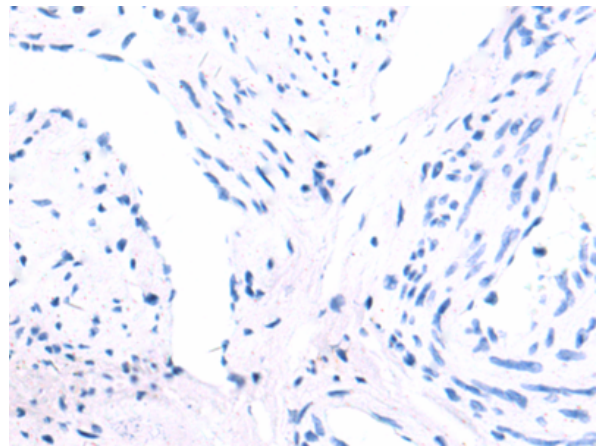
Immunohistochemistry analysis of paraffin embedded Human esophagus cancer tissue using 216736(PGF Antibody) at a dilution of 1/55(Secreted).



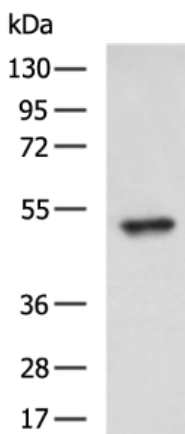
In comparison with the IHC on the left, the same paraffin-embedded Human esophagus cancer tissue is first treated with the fusion protein and then with 216736(Anti-PGF Antibody) at dilution 1/55.



The image on the left is immunohistochemistry of paraffin-embedded Human cervical cancer tissue using 216736(Anti-PGF Antibody) at a dilution of 1/55.



In comparison with the IHC on the left, the same paraffin-embedded Human cervical cancer tissue is first treated with fusion protein and then with D221141(Anti-PGF Antibody) at dilution 1/55.



Gel: 8%SDS-PAGE, Lysate: 40 µg;
Lane: Human placenta tissue lysate;
Primary antibody: 216736(PGF Antibody) at dilution 1/400;
Secondary antibody: HRP-conjugated Goat anti rabbit IgG at 1/5000 dilution;
Exposure time: 40 seconds



Product Description

Pioneering GTPase and Oncogene Product Development since 2010
